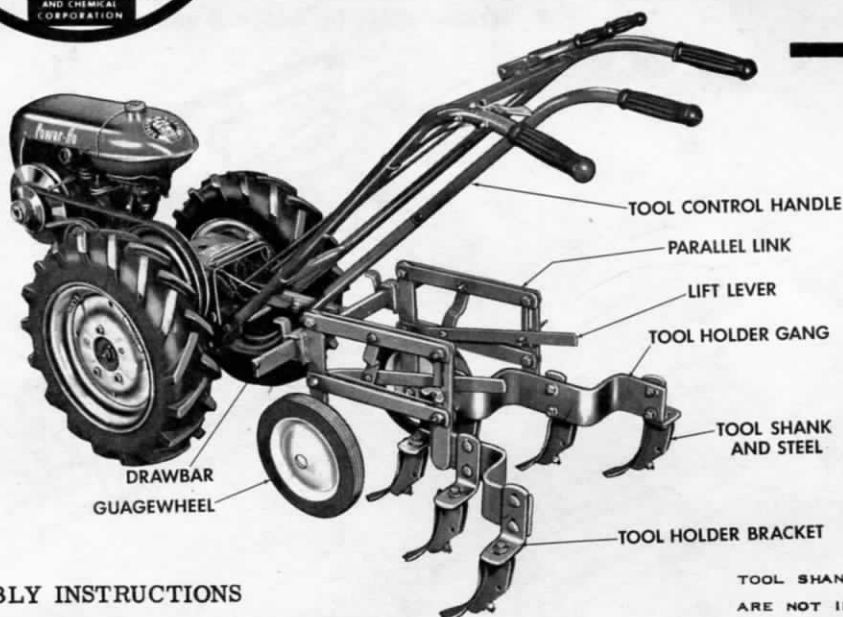




Owner Manual WITH Parts List

Power-Ho HEAVY-DUTY CULTIVATOR TYPE A140B 01



TOOL SHANK AND STEELS ILLUSTRATED
ARE NOT INCLUDED WITH CULTIVATOR.

ASSEMBLY INSTRUCTIONS

The type A140B01 Cultivator is shipped complete in one carton, disassembled for shipping purposes. All miscellaneous hardware items are attached to the pieces on which they will be used. The tool shanks and steels shown are not included with the cultivator unit but can be obtained separately from your Bolens dealer.

Remove all parts from the carton. Assemble the right and left parallel linkage assemblies to the drawbar and attach the wheels to the standards. (Refer to picture above). Next position the tool holder gang standards so that connecting holes line up with holes in the parallel linkage and secure with cap screws and self locking nuts provided. Then attach the six tool holder brackets to the gangs, three on each side.

Assemble the upper and lower halves of the tool control handle and attach assembly to the drawbar. The purpose of this tool control handle is to guide the cultivator along the crop row.

Attach the cultivator unit to the tractor by placing the front end of the drawbar assembly underneath the transmission housing of the tractor so the hole at front of bar lines up with hole in tractor frame. Hold in place by inserting coupling pin which is attached to tractor.

OPERATING INSTRUCTIONS

This cultivator is designed so that depth of cultivation can be regulated with the minimum amount of adjustment. Set the depth pin to desired position in the slot of tool gang holder and lock with wing nut. Lower the lift lever until the depth pin can be inserted in the hole of lever and the tools are locked in position for operation. A floating action may be used if desired by lowering lift levers so they rest on top of extended depth pin.

The width of cultivation is regulated by adjusting the setting of the tools in the tool holder brackets or by moving the position of the tool gangs on the drawbar. The position of left and right hand gangs can be reversed for between row cultivation. The upper mounting holes in the tool holder gangs are slotted to allow for tool pitch adjustment.

When transporting the tractor and cultivator, release and raise the lift levers. This allows the tools to clear the ground and the cultivator will ride on the gauge wheels.

Daily oiling of gauge wheels is recommended. Periodically remove wheels and pack roller bearings with a good grade of bearing grease.

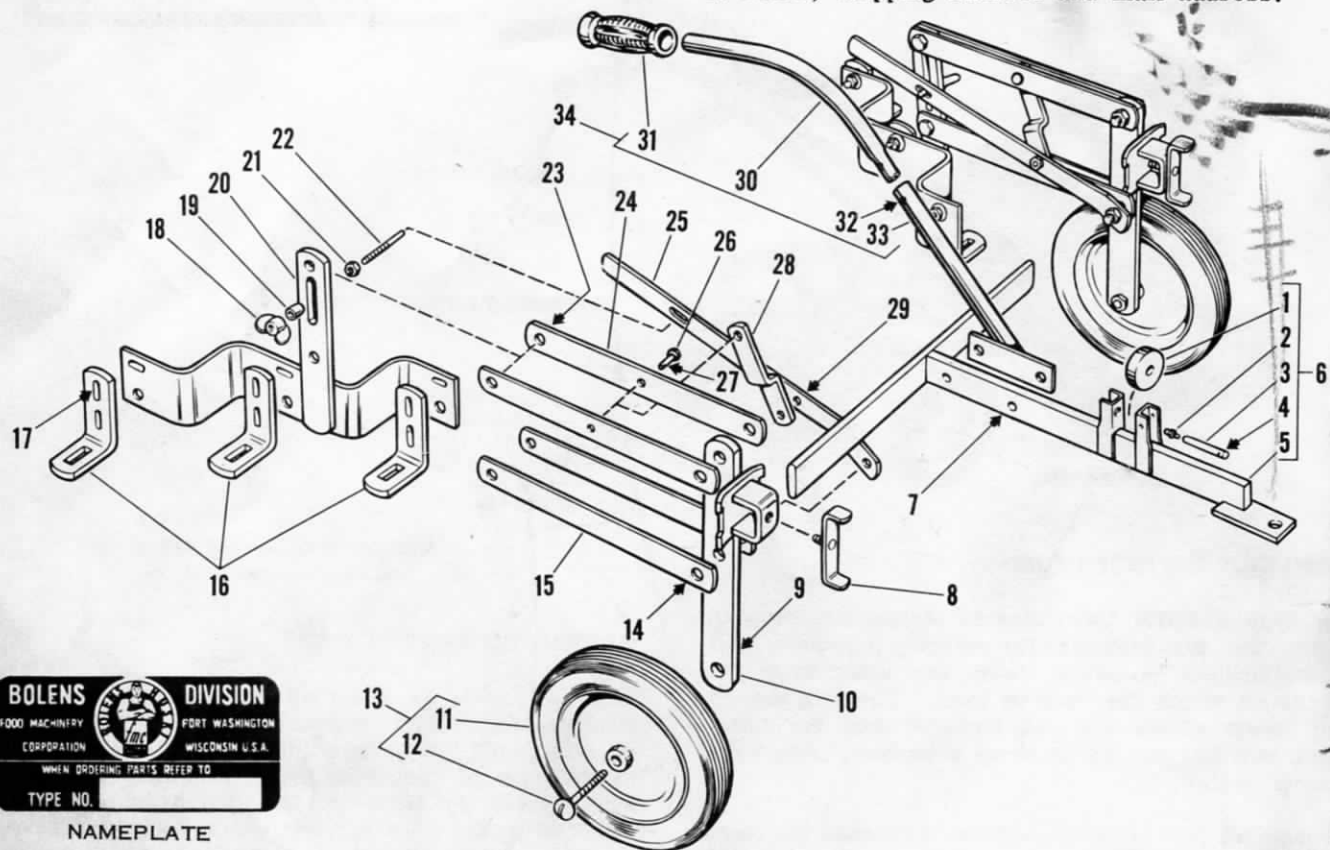
Bolens Products Division
FOOD MACHINERY AND CHEMICAL CORPORATION
PORT WASHINGTON, WISCONSIN

IMPORTANT ORDERING INSTRUCTIONS

In appointing Bolens agencies, consideration has been given to their ability to provide prompt and efficient service. We recommend that your local dealer be contacted for your service requirements. He will furnish correct parts from his stock or order them for you if necessary.

To insure getting correct materials without delay please supply the following information. Please print to avoid errors.

1. The type number of the implement as shown on the name plate illustrated below.
2. Quantity, part number, and description of each part wanted.
3. Advise as to whether parts should be shipped by mail, express or freight. (All repair orders are shipped F.O.B. factory.
4. Name, shipping address and mail address.



Ref. No.	Part No.	Description	No. Req'd.
1	310824	Draw Bar Roller	1
2	1104954	Grease Fitting	1
3	310825	Roller Pin	1
4		Cotter Pin, 1/8 x 1-1/4	1
5	990598	Draw Bar	1
6	1701082	Draw Bar Assy (Incl. 1 thru 5)	1
7		Cap Screw, 3/8-16 x 1-1/4	2
8	1702418	Tee Screw	2
9		Hex Nut, 1/2-13	2
10	1702410	Wheel Std	2
11	1702500	Wheel w/Brg	2
12	1702218	Wheel Bolt	2
13	1702139	Wheel Assy (Incl. 11, 12 Nut and Washer)	2
14		Cap Screw, 1/2-13 x 1-3/4	2
15	1110096	Self Locking Nut, 1/2-13	2
16	1702421	Parallel Link	4
17	1702412	Tool Bracket	6
18		Carr Bolt, 3/8-16 x 1-1/4	12
19	1701069	Wing Nut	2

Ref. No.	Part No.	Description	No. Req'd.
19	1700205	Spacer	2
20	1702414	Tool Holder Gang R.H.	1
21	1702415	Tool Holder Gang L.H.	1
22		Hex Nut, 3/8-16	2
23	1702416	Depth Control Stop	2
24		Cap Screw, 1/2-13 x 1-1/2	6
25	1100096	Self Locking Nut, 1/2-13	6
26	1702436	Parallel Link	4
27	1702420	Lift Lever	2
28	1702438	Pin	2
29		Cotter Pin, 1/8 x 3/4	2
30	1702419	Lever Connector Link	2
31		Cap Screw, 5/16-18 x 7/8	2
32	1110107	Self Locking Nut, 5/16-18	2
33	1703149	Upper Guide Handle	1
34	180885	Handle Grip	1
35		Cap Screw, 5/16-24 x 1-1/4	1
36	120989	Self Locking Nut, 5/16-24	1
37	1703151	Lower Guide Handle	1
38	990620	Guide Handle Assy (Incl. Items 30, 31, 32, 33)	1

NOTE: Nuts and bolts are standard sizes and can be obtained from your Hardware or Implement dealer.