



**Simplicity**  
REG U.S. PAT. OFF.

***Wonder-Boy***

**IN PERFORMANCE — VERSATILITY**

**... MUCH MORE THAN JUST A MOWER**





### **a 24" ROTARY MOWER**

In less than a minute, without tools, Wonder-Boy becomes an efficient, heavy duty, riding, 24" rotary mower. Performance on fine lawns, or in heavy weeds is so outstanding as to provide a completely new, quality concept of rotary mowing or leaf mulching. Climbs, and smoothly mows grades up to 35% — safely. New, "free-floating" mower hitch permits cutting over rough, uneven ground, ditches and slopes—without "scalping". Height of cut is quickly and easily adjusted.

### **b 30" REEL TYPE MOWER**

To keep the finest of lawns looking their smoothest, velvety best — here's the combination that in virtually no time at all has them as smooth and ripple-free as a fine lawn can be. Wonder-Boy, with this fast, smooth-cutting, heavy duty, ball bearing, 30" reel type mower mows those fine lawns of Blue Grass or Merion Bent as frequently as needed to keep them looking trim. Five blade reel is power driven with independent, convenient clutch control. One simple height adjustment assures a level cut. Trims close to walls, fences, borders.

### **c 59" GANG MOWER**

At homes, schools, institutions, estates, golf courses, — any large lawn area, Wonder-Boy can become a hardworking "care-taker" in less than a minute . . . mowing up to 1-5/8 acres of grass per hour — smoothly — effortlessly! The 30" reel mower, and two, heavy duty, ground-driven, 5-blade, ball bearing, 20" reel mowers . . . towed and spaced with a strong, steel frame assembly — combine to cut a 59" swath. Tracks perfectly on curves, leaving NO uncut strips; tilts to accommodate slopes; special stops to prevent tipping — permit backing up.



**Simplicity**  
REG. U.S. PAT. OFF.

**Wonder-Boy**





d



e

## d 1/2 TON TRAILER CART

For hauling ground, compost, fertilizer, firewood, leaves, feed, seed, tools, gravel, stone, or children ... this combination just can't be beat. Seven cubic foot steel body easily handles 1/2 ton loads. Tailgate is removable. Heavy gauge, welded steel box tips back, and can be easily turned completely over for fast, clean emptying. Pneumatic tires on heavy, steel, roller bearing wheels allow easy hauling on soft ground.

## e IT'S A ROLLER

Let Wonder-Boy with roller in tow smooth and level your lawn, terrace, or driveway — with no effort at all. Goes as fast or slow as the job requires, or reverses easily to back into "tight spots". 21 1/2" wide, non rusting with nylon bearings, water filled weight — 250 lbs.; sand filled weight over 400 lbs.; frame available for roller tow or roller replaces the wheels and axle on the "dump truck" frame — in minutes without tools.



f



g

## i IT'S A HANDY RIDER

For any home — city, country, lake, or farm; Wonder-Boy's a handy, smart looking little runabout! So safe that anyone young or old can use and enjoy it. So nimble, comfortable, easy to start and handle ... so versatile and powerful that its uses — either with or without attachments — are limitless. Wonder-Boy tows, pushes, hauls, climbs ... safely ... no tipping or skidding, exerts less pressure on lawn than the heel of your shoe!

## g A GRADER-PLOW

Wonder-Boy can also take all the physical effort out of light grading, filling, levelling dirt or gravel — or clearing snow from walks, lanes, driveways. Heavy, 30" steel blade is easily attached and controlled ... snow rolls aside, off the curved blade avoiding pile-ups. Angles to either side, or straight ahead. Handy reverse gear shift is instant acting.

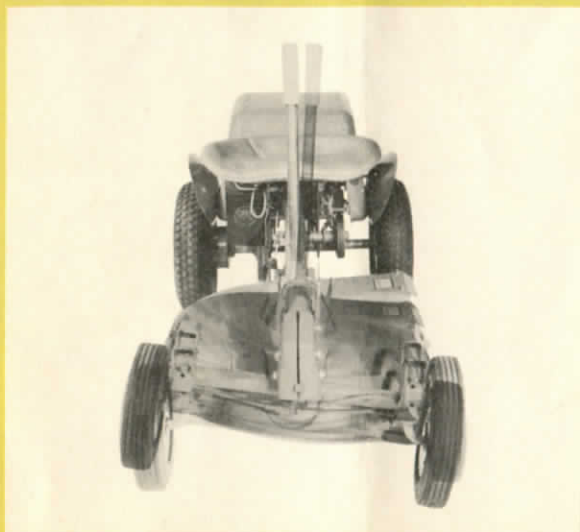
*and  
it's fun  
to ride!*



**Simplicity**  
REG. U.S. PAT. OFF.

**Wonder-Boy**

*Do your outside work the way you*



**FREE FLOATING MOWER  
HITCH FOR EASIER  
CUTTING!**

Wonder-Boy's four wheel design, combined with 24" overall height and 27" overall width, insures a low center of gravity and stability permitting safe, comfortable riding operation on grades as steep as 35%.

Ease of handling, full traction, and riding comfort are largely due to the pivoted or "floating" front axle — allows each wheel to freely rise or lower 8" from horizontal. Rugged, double ball joints on the steering linkage to each front wheel permit complete flexibility, require no maintenance other than occasional lubrication. Wonder-Boy turns in tight circles and maneuvers around bushes, trees, and flower beds with complete ease.



**ONE SIMPLE  
AIRPLANE-TYPE CONTROL  
TO START—STOP—STEER!**

Anyone — young or old — can easily handle the Simplicity Wonder-Boy! Pulling the control handle back slowly — engages the "Soft-Action" clutch — starts off smoothly, no jumping or jerking. Releasing the control handle provides a quick, safe stop. Action is light and easy — no pedals or levers to hold in to cause muscle fatigue or strain. To turn, merely move the control handle in the direction you wish to go.

Front wheel spindles are spring loaded, so that Wonder-Boy virtually straightens out of turns by itself, and just by "letting go" — Wonder-Boy comes to a safe stop. Hand grip is smooth, white plastic — won't soil or rub off on your hands. Airplane-type throttle control conveniently mounted just below front of seat — protected from accidental movement, or catching in clothing . . . has smooth, broad plastic handle, nylon bearings, stainless steel control wire that won't rust or jam. Engine shutoff is provided on top of hood — readily accessible, safe, shockproof.



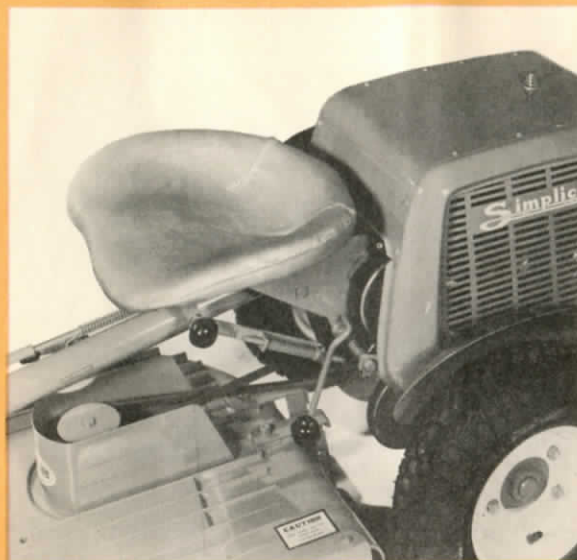
**MODERN REAR ENGINE  
DESIGN IS SAFEST—  
CLEANEST—COOLEST!**

The engine on a Simplicity Wonder-Boy is BEHIND you — so is all the heat, dirt, exhaust, oil and gasoline fumes. This welcome change from "horse and buggy" design avoids the discomfort of sitting on top of — or straddling a hot engine! For added safety, engine is completely enclosed in an attractive hood to prevent any accidental contact with hot, dirty, engine parts. Hood protects engine from moisture, rain, dirt, or blowing snow — prevents stalling. Pivoted at the rear, hood swings completely out of way for refilling gasoline tank — checking engine.

"Flair-Stream" fenders protect driver from rear wheel splashing. Large bucket-type seat gives firm support, real riding comfort . . . you "float" on a 3/4" cushion of foam rubber, covered with soilproof Koroseal, resists wear, wipes clean with a damp sponge, always cool!



*want it done...quickly, easily, safely...have fun!*



### **EFFICIENT GEAR DRIVE WITH HANDY SHIFT-LEVER REVERSE!**

Safe, positive, efficient, maintenance-free life, Simplicity Wonder-Boy uses carburized and hardened steel drive gears ... machined and cut in our own plant to better control the accuracy and quality — on new, highly accurate equipment, capable of turning out gears to the same tolerances as those used in the automotive industry.

Gears drive to a 1-1/8" steel axle (heavier than most passenger car or pickup truck axles!) are fully enclosed in a leak-proof, dirtproof steel housing. The positive engaging gear shift lever is located to the left, just beneath the seat. The left hand on the plastic shift leverball pushes down for reverse and upward to advance. Gear shift lever also doubles as an emergency brake in uppermost or lowest positions. Wonder-Boy is more maneuverable — easier to operate than the family car!



### **EASY TO START— ECONOMICAL — DEPENDABLE — POWERFUL!**

Wonder-Boy starts faster and easier with a fast acting, heavy duty recoil starter, using a new, non-kinking nylon cable. Recoil starter handle is easily accessible through a large opening in the right side of the protective hood. The fully enclosed, moisture and dustproof ignition system and hot spark magnet — doubly insures fast, easy starting regardless of temperature or weather.

Wonder-Boy has MORE than adequate power to handle any job with complete ease and efficiency. A nationally famous, fully guaranteed, heavy duty, cast iron, 3.6 h.p. engine was power designed for Wonder-Boy. Complete performance and specifications are shown on pages 6 and 7. Electric starting equipment will be made available later.



### **STURDY — RUGGED — FULLY PROVED AND TESTED!**

Simplicity's Wonder-Boy is the culmination of 35 years of engineering and manufacturing experience in the field of Outdoor Power Equipment. Famous Simplicity "Battleship" construction — electrically welded steel, carefully reinforced to form a unit that will take many long years of hard abuse.

Design and construction of the Wonder-Boy and its attachments have been thoroughly tested at Simplicity's Proving Grounds — the largest and finest in the industry. Proved under adverse conditions of weather and load, to provide a guarantee of satisfactory performance! The best of materials — the best of design and engineering — carefully bench assembled by highly skilled workmen — all to provide the very best possible performance—TRUE LASTING QUALITY THROUGHOUT!



**Simplicity**  
INC. PAT. OFF.

**Wonder-Boy**

## PERFORMANCE DATA

### WITH 24" HEAVY DUTY ROTARY MOWER —

— will mow or mulch over  $\frac{5}{8}$  acre of average level lawn area per hour — 28,580 sq. ft. per hour, or an area 104 ft. by 275 ft.

### WITH 30" REEL TYPE MOWER —

— will mow over  $\frac{3}{4}$  acre of average level lawn area per hour — 36,750 sq. ft. per hour, or an area 104 ft. by 353 ft.

### WITH 30" REEL AND TWO GANG COMPANION MOWERS —

— a 59" swath — mows up to 1- $\frac{5}{8}$  acres of average level lawn area per hour — 73,507 sq. ft. per hour, or an area 351 ft. by 208 ft.

### WITH 30" GRADER-SNOW BLADE —

— will clear a path over 1200 ft. long, 6 ft. wide, in snow 4" deep in one hour. Angled swath — 26".

### WITH $\frac{1}{2}$ TON TRAILER CART

— will easily handle  $\frac{1}{2}$  ton loads; Box — 7 cu. ft., level capacity; 9 cu. ft. ( $\frac{1}{3}$  yd.) heaped capacity.

### TURNING AND MOWING RADII —

— will turn to outside of  $1\frac{1}{4}$  ft. radius; completely inside a  $4\frac{1}{2}$  ft. radius. With 24" Rotary Mower will cut to outside of 2 ft. radius. With 59" Gang Mowers, cuts easily to outside of 16" radius.

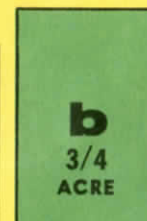
### CLIMBING — STABILITY —

— will operate easily, safely, comfortably on grades to 35% ... straight up or down, quartering, or full side.

### SPEED — FUEL CONSUMPTION —

Average operating speed under normal load and mowing conditions — 2 to 3 m.p.h. Fuel Consumption —  $1\frac{1}{2}$  to 2 qts. per hour based on average conditions of load, speed, and carburetor adjustment.

### Area Mowed In ONE Hour

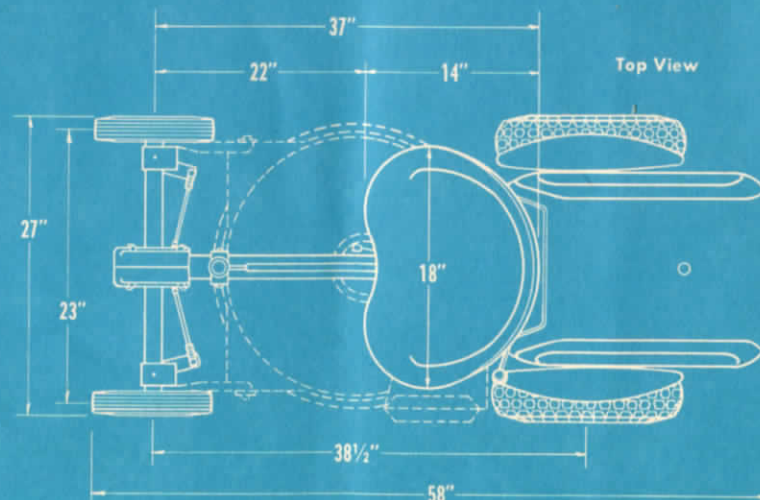
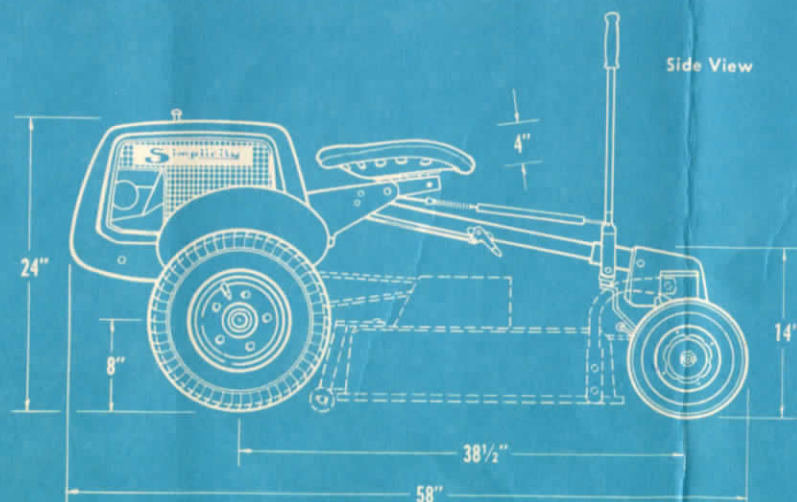


**a** — With 24" Rotary Mower.

**b** — With 30" Reel Type Mower.

**c** — With 59" Reel Gang Mowers.

## DIMENSIONS





# SPECIFICATIONS **Simplicity Wonder-Boy**

**ENGINE:** Bore — 2-15/32"; Stroke — 2-1/8"; Displacement — 10.2 cu. in.; H.P. — 3.6 at 3600 r.p.m.; Type — 4 cycle, single cylinder, L-head, aircooled, heavy duty, cast iron; Starter — recoil with nylon cable; Ignition — very high voltage, enclosed flywheel magneto, moisture and dustproof; Spark Plug — 14 mm.; Lubrication — splash type; Oil Capacity — 20 ounces; Carburetor — full float feed with idle and high speed adjustment; Governor — fast acting flyball type, entirely enclosed, running in oil; Main Bearings — precision ball bearings; Crankshaft — counterweighted, induction heat treated, "Arma" steel; Connecting Rod — aluminum alloy, I-beam, with large bearing area; Piston — aluminum alloy with extended skirt; Piston Rings — 2 compression, 1 slotted oil, surface treated; Valves — forged steel, heat resistant head on exhaust valve; Valve Tappets — hardened and ground steel; Cylinder and Crankcase — tempered, close grained, cast grey iron; Cylinder Head — aluminum with deep cooling fins; Air Cleaner — special filter type maze; Fuel Tank — 2 qt. capacity with visible strainer and shut off valve; Finish — heat resisting red enamel.

**CLUTCHES:** Simplicity "Soft-Action" — spring loaded idlers; one for unit propulsion to control handle; one for powered attachments — to left and below seat — equipped with smooth plastic knob.

**TRANSMISSION GEARS:** Simplicity machined and cut; carburized and hardened steel drive pinion, dual intermediate, and drive gear (keyed to differential tube). Gear train ratio approx. 41:1. Complete engine to wheel ratio approx. 66:1. Fully enclosed in gasketed, leakproof, dirtproof steel housing. Gears operate on heavy, rustproof, bronze bearings, turning on carburized and hardened steel shafts. Lubrication — grease. Case fitted with Alemite non-check fitting, grease seals to axle.

**REVERSE GEAR:** Carburized and hardened spur gear operating as an idler on drive pinion. Pivoted to drive on dual intermediate gear, enclosed with gear train. Lever operated, spring loaded to hold in position. Drilled for force feed lubrication to bronze bearing on carburized and hardened shaft.

**REAR AXLE:** 1-1/8" diam. steel, operating in wide, heavy, ball indented bronze bushings. Equipped with truck type, spur gear differential. Carburized and hardened spur gears operate on hardened, finely finish ground pinion shafts.

**FRONT AXLE:** 1 1/2" o.d., heavy wall steel tubing, pivoted on center to provide flexible "floating" action; permits front wheels to rise or lower 8" from horizontal — a total vertical movement of 16" without tipping unit off vertical position. Axle support housing — rugged reinforced castings.

**STEERING:** Airplane-type control handle has leverage ratio of 3:1. Exclusive Simplicity "safety-spring-loaded" front wheel spindle design. Adjustable, double ball joint suspension on each front steering tie rod for flexibility, strength, ease of handling.

**FRAME:** All frame members of heavy, electrically

welded steel; with heavy welded crossbracing carefully designed to properly distribute any stresses or torque. Center frame of heavy wall, tubular, alloy steel, 1-7/8" o.d. Simplicity "Battleship" construction.

**SEAT:** Large, deep, steel, bucket-type; cushioned with 3/4" of virgin foam rubber; covered with heavy silver Koroseal — waterproof, soilproof, always cool — comfortable. Securely mounted.

**WHEELS AND TIRES:** Rear — 4:00 x 8, 2 ply, 16" o.d., full pneumatic, knob tread traction tires. Drop center, steel disc wheels — 3 stud mounting to heavy cast hubs. Front — 10 x 2.75, 10" o.d., broad face, semi-pneumatic tires on deep hub steel wheels.

MFRS. NUMBER 990086. Shipping Weight 230 lbs.

## Attachments

**24" "W-B" HEAVY DUTY ROTARY MOWER — LEAF MULCHER:** Housing — dense, aluminum alloy, cast in permanent molds; heavy reinforcing sections, ribs, and wide base flange for strength — distribution of operational shocks and strains. Depth of housing, internal baffle, and wide opening prevents packing or blocking in dense growth. External deflector and efficient safety guard on outlet. Blade — solid, safe, one piece, hardened, high carbon steel — will retain an edge, sharpens easily. Designed for proper lift, cuttings are ejected evenly without windrowing or "clumping". Sharpened edge of blade is ground from bottom for smoother cutting — eliminates bruising of grass, damage from embedded stones ... will not "dig in". Is completely recessed within housing for complete safety — also prevents scalping. Blade shaft operates in tubular steel housing on two rows of precision ball bearings — sealed to outside, shielded to inside; oil bath lubrication, — requires a refill of oil only once per season. Mounting and Adjustment — exclusive Simplicity "FREE-Floating" hitch allows mower to tilt-follow contours with front wheels — plus raise and lower independently on rear gauge rollers. Can be easily adjusted from 1 3/4" to 3 1/4" height in front and rear for smooth level cutting. Mounts quickly and easily with two steel pins — no tools required.

MFRS. NUMBER 990087. Shipping Weight 60 lbs.

Leaf Mulcher with special blade, MFRS. NUMBER 990040. Shipping Weight 8 lbs.

**30" "W-B" HEAVY DUTY REEL TYPE MOWER:** This fast, smooth cutting mower is quickly and easily mounted without tools ... is equipped with grease packed, sealed ball bearings. Height of cut is adjustable from 1" to 3" ... adjustments are made only at the rear of mower, assuring horizontal cuts at all heights. Eliminates appearance of ridges and ripples in the lawn. Exclusive Simplicity "FREE-Floating" hitch allows mower to tilt — follow contours with front wheels — plus raise and lower independently on 2 section rear gauge rollers. Cutting reel is controlled by independent clutch on Wonder-Boy. Five

blade reel of specially rolled, heat treated alloy steel — has seven reel spiders to maintain positive blade alignment. Cutter bar is reinforced with a heavy, rigid casting — with positioning adjustment to maintain smooth, even cutting the entire length of reel. Special spring-loaded slip clutch on reel drive prevents damage to reel if objects become wedged between cutter bar and reel. Heavy steel box construction — complete with protective top shield. MFRS. NUMBER 990089. Shipping Weight 92 lbs.

**"W-B" TWO GANG COMPANION MOWERS FOR 59" WIDTH OF CUT:** For combined use with 30" Heavy Duty Reel Type Mower, Article No. 99. Consists of two, heavy duty, ground-driven, 20" mowers — towed and spaced out with a strong steel frame, having special stops to prevent tipping. Designed to track perfectly, does not leave uncut strips on turns — permits backing up, as well as tilting to accommodate working along slopes. Mowers have five blade reels of specially rolled, heat treated alloy steel — with five reel spiders to maintain positive blade alignment. Equipped with grease packed, double shielded, precision ball bearings ... rigid steel cutter bars ... 10" wheels with semi-pneumatic, knob tread traction tires for positive drive ... 3 section gauge rollers. Height of cut adjustable from 1/2" to 2 1/2". Quick, drop-pin attachment — without tools, permits rapid disengagement to finish "tight-spots" with power reel only. Maneuvers easily — leaves no strip uncut in full 180° turn. Heavy steel construction throughout. MFRS. NUMBER 990092. Shipping Weight 126 lbs.

**"W-B" 1/2 TON TRAILER CART:** Box — welded, 16 gauge steel; 7 cu. ft. struck (level), to 9 cu. ft. (1/3 cu. yd.) heaped capacity ... 39" long, 26" wide, 12" deep. Removable tail gate. 4:00 x 8, 2 ply, 16" o.d., pneumatic tires; mounted on heavy steel, roller bearing wheels. Strong, square steel tongue with quick, drop-pin hitch. 3/4" diam. steel axle, cambered to accommodate heavy loading. Heavy steel frame, fully cross-braced, electrically welded. Latch release box — tips up — is easily turned completely over to "dump clean". Overall width — 36 1/2". MFRS. NUMBER 990085. Shipping Weight 66 lbs.

**"W-B" ROLLER:** 12 gauge steel, 21 1/2" wide, 18" diameter, water filled weight — 250 lbs.; sand filled — over 400 lbs. Nylon Bearings require no lubrication. Quickly replaces wheels and axle on universal frame or Trailer Cart frame. MFRS. NUMBER 990091. Shipping Weight 60 lbs.

**"W-B" GRADER — SNOW BLADE:** 30" wide, 15 1/2" high — can be angled right, left, or straight ahead. Angled swath — 26". 3/4" diameter, steel gauge shoes — adjustable to raise blade for riding over gravel, rough pavement; or for leveling and filling. Quickly attaches to front axle. MFRS. NUMBER 990088. Shipping Weight 42 lbs.

**NOTE:** Many "standard" pieces of equipment can be attached to the rear hitch on Wonder-Boy, such as fertilizer spreaders and lawn sweepers.





Visibility and control



Furrow Opener



Cultivating

**Simplicity**  
REG. U.S. PAT. OFF.

**Roticul**

*Gives you more productive*



**SIMPLICITY'S ROTICUL** (Rotary Tiller-Cultivator) has a spading-hoeing action that cuts, breaks up, then gently lifts and tumbles soil into fine (not powdery), ready-to-plant condition ... in less than 1/3rd the time, 1/10th the physical effort of any hand method. Roticul not only completely prepares and aerates soil for planting lawns, gardens, truck garden or greenhouse crops; but also enables you to do an excellent job of improving and enriching soil by more thoroughly "working in" compost, peat moss, fertilizers, soil conditioners, cover crops or plant trash than could ever be done with a hoe, spade, rake, and muscle. The Simplicity Roticul is more adept at either tilling or cultivating, due to the ease of operation and maneuverability provided by:

**1: EASY-ACTION FINGERTIP TINE CONTROL** — gives instant, safe, complete control of tines. Action is light and easy — by actual measurement, less pressure is required to engage Roticul tines than is needed to pull the trigger on a fine rifle or shotgun. Safest — because you never have to remove your hands from the "grips" to start or stop tine action.

**2: COMPLETE VISIBILITY** — you see exactly *what* you are doing, and *where* you are at all times with Roticul — because the special twist-sweep design of Roticul tines permits a **SLOWER TINE SPEED** — virtually eliminating the throwing of ground, debris, or stones ... making vision obstructing shields unnecessary. The heavy, positive, worm gear drive to center of the tine shaft also eliminates bulky "side-drive" mechanisms — which limit both





Truck Garden



Small Garden

# *soil...faster...easier...*

visibility as well as width-of-cut flexibility. These two, great Roticul features — control and visibility — make it possible to “inch” right in close to bushes, fences, flowers, walls, and trees without scuffing, bruising, or in any way damaging them. Wonderful when working established gardens.

**3: WIDTH-OF-CUT FLEXIBILITY** — with Roticul, width of cut can be changed in less than a minute — without tools. Standard tilling or cultivating width, as shipped, is 20½". This width can be easily changed to 16", 12", 8½". Similarly, width can be increased to 29" or 35" by simply adding pairs of tine assemblies, available from your Simplicity dealer at slight additional cost.

Roticul tines are **GUARANTEED UNBREAKABLE** ... are forged from 1½ lb. bars of high carbon alloy steel, carefully heat treated and inspected. When used in average soil, tines are self-sharpening. It is not necessary to remove grass or sod before “Roticuling” ... it is recommended, however, if grass or growth is exceptionally high, it should be mowed before proceeding. (Simplicity’s Sickle Bar Mower is ideal for this!) Roticul will then cut, and mix in this “cover crop” to enrich soil. Due to its compactness and ease of handling, Roticul has also been successfully used for loosening soil in trenches for foundation footings, irrigation and drainage ditches; preparing tobacco beds; turning and enriching greenhouse soil right in the “trays”; furrow opening.



Green House



Soil preparation



# CHECK THESE

# Roticul

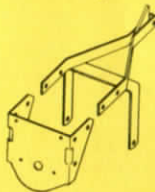
# FEATURES

## 2 3/4 H. P. Rotary Tiller - Cultivator

1. **"BATTLESHIP" CONSTRUCTION** — heavy gauge steel, reinforced by electrically welded, alloy steel framing members — for long, trouble-free life.
2. **THOROUGHLY TESTED AND PROVEN** — on the Simplicity proving grounds — the largest, finest in the industry. Only the very best can survive this brutal, round-the-clock punishment—equivalent to many years of normal usage — an assurance of fine performance.
3. **WRITTEN GUARANTEE** — this comprehensive, written guarantee (as shown on back cover) is backed by 35 years of engineering and manufacturing experience in the field of Outdoor Power Equipment.
4. **ADJUSTABLE HANDLEBARS** — 5 1/2" vertical range of adjustment to maximum operating comfort to suit your height.
5. **FINGERTIP THROTTLE CONTROL** — airplane-type, conveniently located. Has smooth, broad plastic handle, nylon bearings for easy operation. Stainless steel control wire won't rust or jam.

6. **REINFORCED TUBULAR STEEL HANDLEBARS** — have welded steel crossbrace for added rigidity and strength.

7. **ELECTRICALLY WELDED STEEL FRAME ASSEMBLY** — prevents any bending or twisting — rigid, heavy alloy steel.



8. **HEAVY—RIGID-STEEL BRACKET** — formed from heavy duty bumper steel, 1/8" thick. Strengthened with deep reinforcing "gussets".

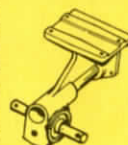
9. **ADJUSTABLE DEPTH BAR** — heavy steel bar is quickly, easily adjusted to provide "drag" — controls cutting depth of tines. Spacing of holes also permits attachment of standard cultivator tool holder assemblies.

10. **10" DEEP HUB TRANSPORT WHEELS** — are standard equipment. Semi-pneumatic tires. Tread quickly adjustable from 5" to 10 1/4". Provide better maneuverability and ease of transporting.

11. **"FASTATCH" TINE ASSEMBLIES** — no tools required to change width of cut. Standard width of cut is 20 1/2". Easily changed to 16", 12", 8 1/2". Width can be increased to 29" by adding pair of tine assemblies available at slight additional cost.

12. **TINES GUARANTEED UNBREAKABLE** — 1 1/2 pound tines are forged from heavy bars of high carbon, alloy steel — carefully heat treated and inspected ... are non-winding, self-sharpening.

13. **STRENGTH — PERFECT, LASTING ALIGNMENT** — for all parts of the drive assembly is insured by this precision machined, 24 pound, cast, worm-drive motor support housing. An exceptionally strong, "foundation" for the entire unit. Capacity—8 ounces special Roticul oil.



14. **HARDENED 1" STEEL TINE SHAFT** — is supported on both sides of gear housing by precision needle bearings.

15. **BRONZE ALLOY WORM GEAR** — is accurately matched to steel drive worm, insuring long life ... operates in oil bath. Is keyed to tine shaft.



16. **STRONG STEEL DRIVE WORM** — is finely finish ground after carburizing and hardening, to insure accuracy. Keyed to 3/4" steel drive shaft. Total ratio approx. 48:1.

17. **LARGE PRECISION GROUND BALL BEARINGS** — on both sides of the worm gear — insure efficient, long lasting support for the worm drive shaft. Constant oil bath lubrication.

18. **SPECIAL TINE DESIGN** — permits slower tine speed ... eliminating throwing of debris and stones — making vision obstructing shields unnecessary.

19. **FAST — EASY STARTING** — Recoil starter with new non-kinking nylon cable means that there are no loose cords to wind, rip or lose.

20. **OIL BATH AIR CLEANER—CRANKCASE BREATHER** — keeps dirt and dust out of engine — allows corrosive fumes to escape from crankcase — for longer, more efficient life.

21. **BRIGGS & STRATTON ENGINE** — nationally famous for dependability, easy starting, long life. 4 cycle, air cooled, Model 8B, is rated at 2.75 H.P. at 3600 r.p.m.

22. **3 QUART GAS TANK** — filling will last 2 to 2 1/2 hours under average conditions of load, speed and carburetor setting ... enough to do an area 150' x 30' — 2 passes.

23. **LOW OVERALL HEIGHT — EASY HANDLING** — no tendency to tip, due to low center of gravity. Low, 27" height also means better visibility.

24. **NEW LO-TONE MUFFLER** — reduces normal engine "Bark" to a low whisper — helps maintain good neighbor relations ... exhausts to side away from operator.

25. **FINGERTIP TINE CONTROL** — has light, easy action, conveniently located for operating. No need to remove hands from "grips". Requires less "pull" than match rifle trigger ... permits "inching" tines, to work in close to walls, fences.

26. **WHITE PLASTIC HAND GRIPS** — smooth, comfortable. Will not soil or rub off on hands. Widely spaced for comfort — to provide easy leverage and control.

Carefully bench assembled by proud, skilled workmen in pleasant modern facilities.



**Simplicity**  
U.S. PAT. OFF.

**Roticul**



**NEW 2 3/4 H.P. MODEL "LB" POWER UNIT** — is a full sized, rugged unit, requiring the lowest initial investment. "LB" incorporates the same quality workmanship, materials, heavy construction, hardened steel gears, and versatility of all Simplicity equipment. Has shift lever, geared reverse; fully enclosed all-gear drive; adjustable handlebar height; white plastic hand grips; protective all-weather hood; 100% free wheeling; low pressure bar tread traction tires; Briggs & Stratton engine with recoil starter, Lo-Tone muffler, oil bath air cleaner. Shipping weight 170 lbs.



## POWER UNITS — ATTACHMENTS



**NEW 2 3/4 H.P. MODEL "FB" POWER UNIT** — combines the convenience and flexibility of a selective, automotive-type gear shift — provides instant, easy choice of three forward speeds and reverse, and dual range pulley system giving an additional 3 fast forward speeds — with the versatility of 26 attachments to meet every year-round Outdoor Power Tool requirement. Transmission and all-gear drive are fully enclosed; adjustable handle height; all-weather protective hood; kick stand; convenient controls; low pressure 6" traction tires; Briggs & Stratton engine with recoil starter and Lo-Tone Muffler. Shipping weight 220 lbs.



**BIG 5 H.P. MODEL "VA" POWER UNIT** — combines ample power for heavy duty service with convenience and flexibility of selective automotive-type gear shift — 3 forward speeds and reverse. Shown with 26" Rotary Snow Thrower ... with balance for easy handling — heavy, rugged construction to withstand abuse of long, continuous hard use ... plus versatility of 29 attachments for year-round use. Ideal for professional use. Roller bearing. Transmission; all steel, gear drive; Briggs & Stratton engine with oil bath air cleaner; low pressure 6" traction tires; adjustable handlebars; convenient controls. Shipping weight 306 lbs.

**26" ROTARY SNOW THROWER** — cuts a swath 26" wide up to 20" deep. Revolving outlet duct can be turned to throw snow in any direction. Adjustable shoes to clear rough surfaces. Heavy steel, chain drive, auger type feed breaks up and throws even hard, encrusted snow. Electrically welded, heavy steel construction. No. 990018. Shipping weight 106 lbs.

**24" and 20" ROTARY LAWN MOWERS—LEAF MULCHERS** — these Simplicity-built units will provide an entirely new, quality concept of rotary mowing and mulching.

**30", 24" AND 20" REEL TYPE LAWN MOWERS** — have engine driven cutting reel and independent clutch.

**TWO GANG COMPANION MOWERS** — for large lawn areas — two 20", heavy duty, ground driven mowers.

**RIDING SULKIES** — choice of Standard or Combination units—both afford ride-while-you-work comfort.

**FRONT AND REAR MOUNTED 6 SHOVEL CULTIVATORS** — adaptable to many crops and soil conditions, work astride or between rows.

**ROTARY TILLER-CULTIVATORS** — rear mounted in two sizes. A 12" Standard for average small gardening — fits all Simplicity Models "L", "F", "M" designations.

**30" FAST CUTTING SICKLE BAR MOWER** — walk or ride as you cut 4 to 5 acres per day.

**PLOWS** — 10", 8", 6 1/2" — all with rolling, swivelling coulter; two piece heavy steel beam with landing adjustment to control width of cut and assure true line of draft.

**HARROWS** — 8-12, 6-12, and spike tooth harrows for rear mounting on all Simplicity Power Units.

**BULLDOZER-SNOW BLADES** — efficient, heavy steel blades for clearing snow from walks, lanes, driveways ... or light grading, filling, or leveling dirt or gravel.

**ROTARY WEED CUTTERS** — for clearing all types of rough undergrowth from tall grass to tough weeds and saplings.

**20" LOG AND BRUSH SAW** — operates both vertically and horizontally.

**8 DISC SINGLE ROW SEEDER** — for the serious gardener, works like a big field planter with practically all seeds.

**AMERICA'S NO. 1 LINE OF LAWN AND GARDEN EQUIPMENT**



### *Our Guarantee*

The company warrants Simplicity Garden Tractors and Implements to be free from defects in materials and workmanship. Any part proving defective within 90 days under normal use from date of purchase will be replaced free of charge, F.O.B. Port Washington, Wisconsin, provided such part is returned to factory, transportation charges prepaid.

### *An Invitation . . .*

#### **to visit our plant . . . our proving grounds**

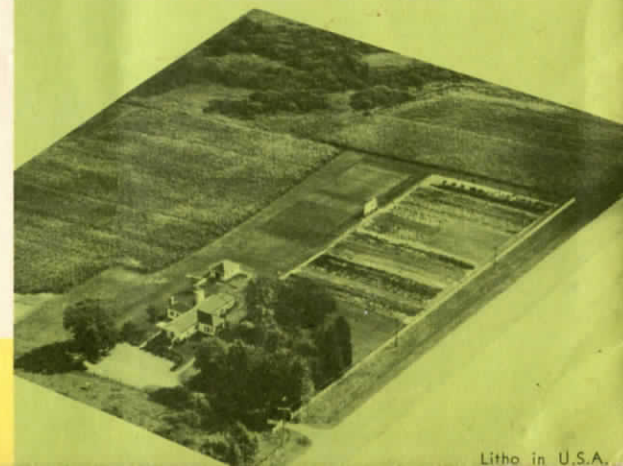
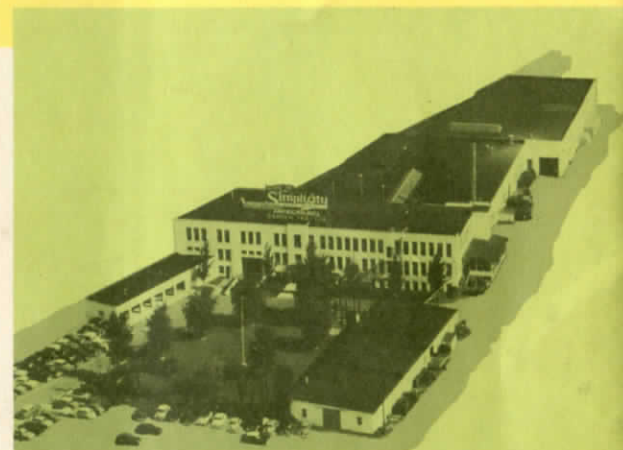
We'd be happy to have you stop in and see this completely modern plant — home of the largest, exclusive manufacturer of Outdoor Power Equipment. Here you can see facilities ranging from engineering, welding, stamping, gear machining and cutting used by skilled craftsmen . . . thorough proof-positive of superior design and construction.

Then too, there's the largest, finest proving grounds in the industry. Forty acres that form an experimental farm that annually wins more than its share of prizes at the county and state fairs . . . as well as a beautiful, well kept spot to put equipment through extensive field tests. Here you can see exactly why more and more people every day will confirm our slogan — America's No. 1 Line of Outdoor Power Equipment.



buy from your authorized **Simplicity** dealer

**SIMPLICITY MANUFACTURING COMPANY • Port Washington, Wisconsin**



Litho in U.S.A.