



Grand Sierra - Ariens GT Rotary Mowers

Owner/Operator & Parts Manual

Models

831026 - 60" RM

831031 - 48" RM

CONTROLS AND FEATURES

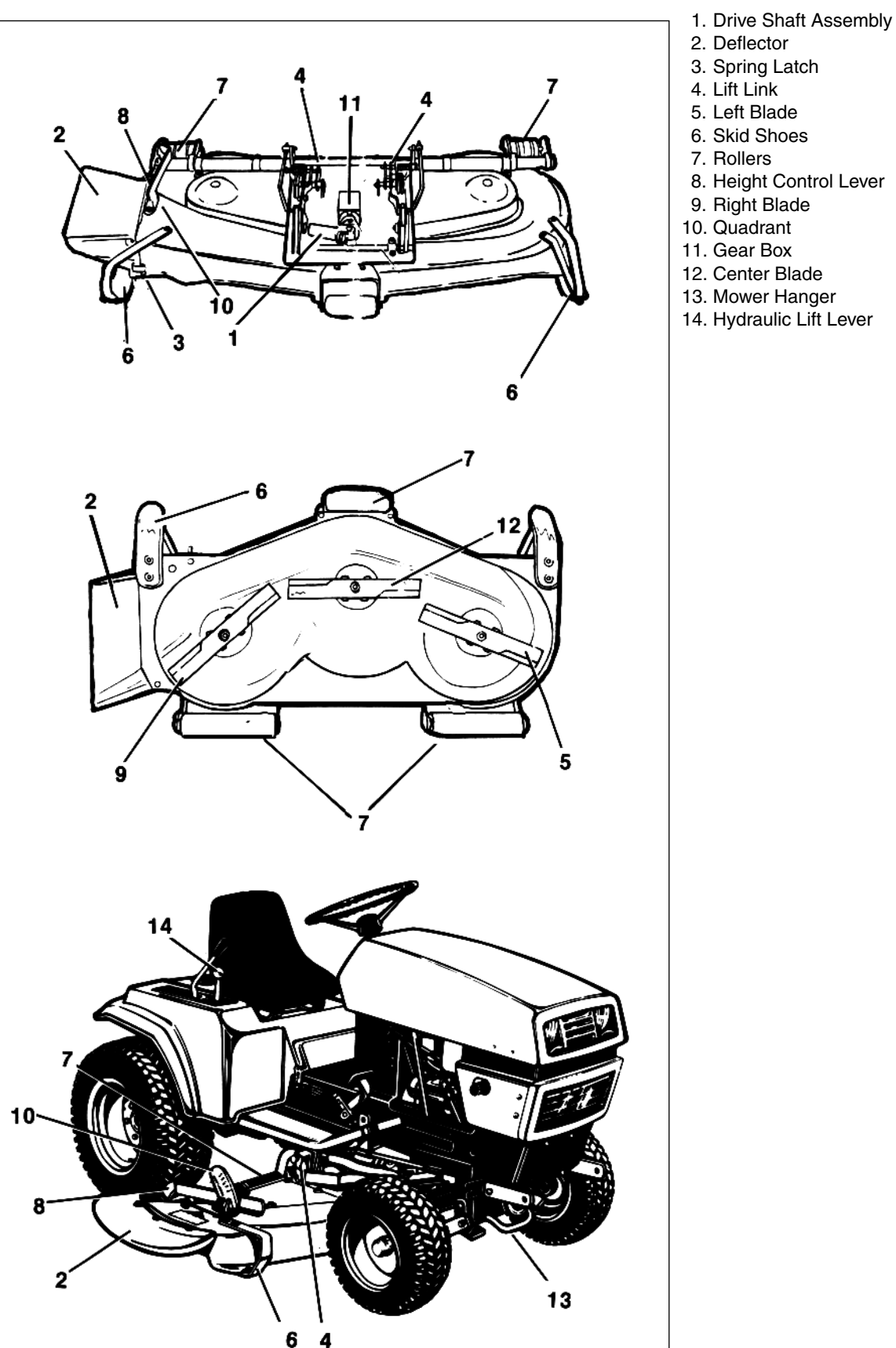


Figure 1

TABLE OF CONTENTS

Controls and Features	2	Service and Adjustments	11
Introduction	3	Storage	13
Safety	4	Troubleshooting	13
Assembly	7	Warranty	14
Operation	9	Parts List	15
Maintenance	10		

INTRODUCTION

THE MANUAL

Before operation of unit, carefully and completely read your manuals. The contents will provide you with an understanding of safety instructions and controls during normal operation and maintenance.

All reference to left, right, front, or rear are given from operator sitting in operation position and facing the direction of forward travel.

MODEL AND SERIAL NUMBERS

Transfer
model & serial
number label
from product
registration
here.

When ordering replacement parts or making service inquiries, know the Model and Serial numbers of your unit.

Numbers are located on the product registration form in the unit literature package. They are printed on a serial number label, located on the frame of your unit.

- Record Attachment Model and Serial numbers here.

UNAUTHORIZED REPLACEMENT PARTS

Use only Ariens replacement parts. The replacement of any part on this vehicle with anything other than an Ariens authorized replacement part may adversely affect the performance, durability, or safety of this unit. Ariens disclaims liability for any claims or damages, whether warranty, property damage, personal injury or death arising out of the use of unauthorized replacement parts.

DISCLAIMER

Ariens reserves the right to discontinue, make changes to, and add improvements upon its products at any time without public notice or obligation. The descriptions and specifications contained in this manual were in effect at printing. Equipment described within this manual may be optional. Some illustrations may not be applicable to your unit.

PRODUCT REGISTRATION

The Ariens dealer must register the product at the time of purchase. Registering the product will help the company process warranty claims or contact you with the latest service information. All claims meeting requirements during the limited warranty period will be honored, whether or not the product registration card is returned. Keep a proof of purchase if you do not register your unit.

Customer Note: If the dealer does not register your product, please fill out, sign, and return the product registration card to Ariens or go to www.ariens.com.

DELIVERY

Customer Note: If you have purchased this product without complete assembly and instruction by your retailer, it is your responsibility to:

1. Read and understand all assembly instructions in this manual. If you do not understand or have difficulty following the instructions, contact your nearest Ariens Dealer for assistance. Make sure all assembly has been properly completed and safety interlock system works properly.

NOTE: To locate your nearest Ariens Dealer, call 1-800-678-5443 or go to www.Ariens.com on the internet.



WARNING: Improper assembly or adjustments can cause serious injury.

2. Understand all Safety Precautions provided in the manuals.
3. Review control functions and operation of the unit. Do not operate unit unless all controls function as described in this manual.
4. Review recommended lubrication, maintenance and adjustments.
5. Fill out Original Purchaser Registration Card and return the card to Ariens.

SAFETY

SAFETY ALERTS



Look for these symbols to point out important safety precautions. They mean:

Attention!



Personal Safety Is Involved!

Become Alert!

Obey The Message!

The safety alert symbols above and signal words below are used on decals and in this manual.

Read and understand all safety messages.



DANGER: IMMINENTLY HAZARDOUS SITUATION! If not avoided, WILL RESULT in death or serious injury.



WARNING: POTENTIALLY HAZARDOUS SITUATION! If not avoided, COULD RESULT in death or serious injury.



CAUTION: POTENTIALLY HAZARDOUS SITUATION! If not avoided, MAY RESULT in minor or moderate injury. It may also be used to alert against unsafe practices.

NOTATIONS

NOTE: General reference information for proper operation and maintenance practices.

IMPORTANT: Specific procedures or information required to prevent damage to unit or attachment.

PRACTICES AND LAWS

Practice usual and customary safe working precautions, for the benefit of yourself and others. Understand and follow all safety messages. Be alert to unsafe conditions and the possibility of minor, moderate, or serious injury or death. Learn applicable rules and laws in your area. Always follow the practices set forth in this manual.

REQUIRED OPERATOR TRAINING

Original purchaser of this unit was instructed by the seller on safe and proper operation by the seller. If unit is to be used by someone other than original purchaser; loaned, rented or sold, ALWAYS provide this manual and any needed safety training before operation.

SAFETY DECALS AND LOCATIONS

ALWAYS replace missing or damaged Safety Decals. Refer to figure below for Safety Decal locations.

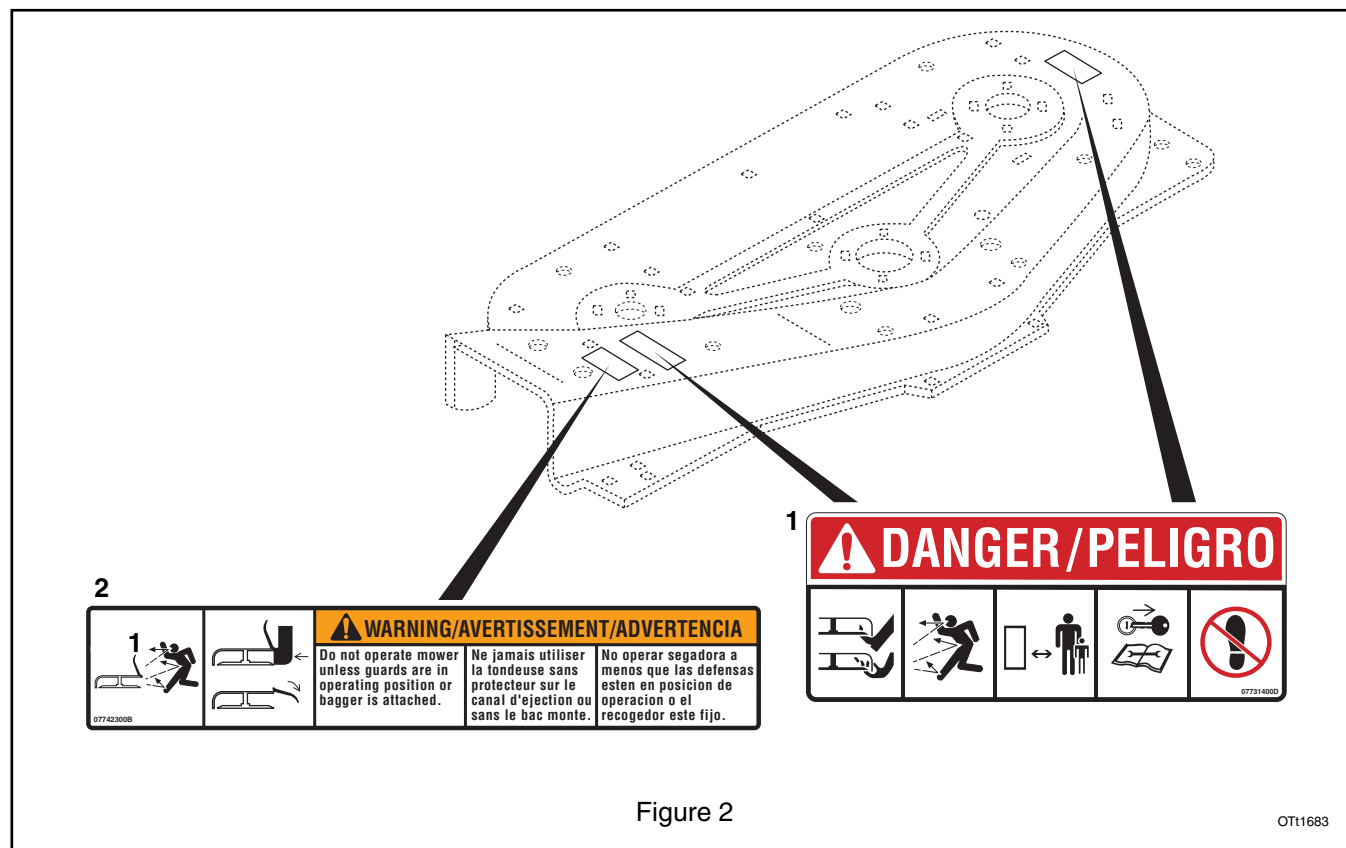


Figure 2

OT11683

1. DANGER! ROTATING PARTS



OL3030

Always keep feet and hands away from rotating parts.



OL0910

Always stand clear of discharge area. Do not direct discharge toward other people.



OL3292

Keep people away from unit while operating.



OL4010

Shut off engine, remove key, read manual before you adjust or repair unit. Never carry passengers.



OL4420

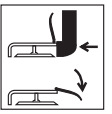
NO STEP! Always keep feet away from rotating parts.

2. WARNING! Do not operate mower unless guards are in operating position or bagger is attached.



OL4430

Always stand clear of discharge area.



OL3320

Do not operate mower unless bagger is attached or guards are in operating position.

ASSEMBLY SAFETY RULES

Read, understand, and follow all safety practices in Owner/Operator Manual before beginning assembly. Failure to follow instructions could result in personal injury and/or damage to unit.

ALWAYS remove key and/or wire from spark plug before assembly. Unintentional engine start up can cause death or serious injury.

OPERATIONAL SAFETY RULES

Walk Around Inspection

Complete a walk around inspection of unit and work area to understand:

- Work area
- Your unit
- All safety decals

Work Area

ALWAYS check overhead and side clearances carefully before operation. **ALWAYS** be aware of traffic when operating along streets or curbs.

Keep children and people away. Stop the machine is anyone enters your work area. Keep children out of work area and under watchful care of a responsible adult.

Keep area of operation clear of all toys, pets, and debris. Thrown objects can cause injury. Tall grass can hide obstacles.

Check for weak spots on dock, ramps or floors. Avoid uneven work areas and rough terrain. Stay alert for holes, roots and other hidden hazards.

Avoid uneven and rough terrain. **DO NOT** operate near drop offs, ditches, or embankments. Unit can suddenly turn over if a wheel is over the edge of a cliff or ditch, or if an edge caves in.

Personal Safety

Only trained adults may operate unit.

Training includes actual operation.

NEVER allow children to operate or play on or near unit. Be alert and shut off unit if children enter area.

NEVER operate unit after or during the use of medication, drugs or alcohol. Safe operation requires your complete and unimpaired attention at all times.

DO NOT wear loose clothing or jewelry and tie back hair that may get caught in rotating parts.

Wear adequate outer garments.

NEVER wear open sandals or canvas shoes during operation. Wear adequate safety gear, protective gloves and footwear.

Wear proper footwear to improve footing on slippery surfaces.

Always wear safety goggles or safety glasses with side shields when operating mower.

Moving parts can cut or amputate fingers or a hand. Wrap blade(s) or wear gloves to service.

On multi-blade mowers, rotation of one blade will cause all blades to rotate.

NEVER place your hands or any part of your body or clothing inside or near any moving part while unit is running.

ALWAYS keep hands and feet away from all rotating parts during operation. Rotating parts can cut off body parts.

ALWAYS keep body and hands away from pin holes or nozzles which eject hydraulic fluid under pressure.

DO NOT touch parts which are hot. Allow parts to cool.

ALWAYS keep hands and feet away from all pinch points.

Fumes from the engine exhaust can cause death or serious injury. **DO NOT** run engine in an enclosed area. Always provide good ventilation.

Operation

Understand:

- How to operate all controls
- The functions of all controls
- How to STOP in an Emergency
- Turning radius and clearances

Keep safety devices or guards in place and functioning properly. NEVER modify or remove safety devices.

Ensure Safety Interlock System on tractor is functioning properly. DO NOT operate unit if safety interlock is damaged or disabled. Check operation of safety system frequently.

Before starting engine: disengage PTO, place shift lever in neutral, lower attachment and set parking brake.

Dust, smoke, fog, etc. can reduce vision and cause an accident. Mow only in daylight or good artificial light.

Avoid slippery surfaces. Always be sure of your footing.

DO NOT mow on wet grass. Reduced traction could cause sliding.

Never carry passengers.

DO NOT try to stabilize the machine by putting your foot on the ground.

Never direct discharge towards persons or property that may be injured or damaged by thrown objects. Use extreme caution on gravel surfaces. Stay alert for hidden hazards or traffic.

Always stand clear of the discharge area.

ALWAYS disengage PTO, stop unit and engine, remove key, engage parking brake and allow moving parts to stop before leaving operator's position.

DO NOT operate at too fast a rate. DO NOT change engine governor settings or over-speed engine. Slow down before turning.

Use extreme caution when approaching blind corners, shrubs, trees or other objects that may obscure vision.

DO NOT operate in reverse unless absolutely necessary. ALWAYS look down and behind before and while backing.

If equipment vibrates abnormally, stop engine at once, wait for moving parts to stop and remove wire from spark plug. Repair any damage before restarting unit.

Take all possible precautions when leaving unit unattended. Shut off engine. Remove wire from spark plug and secure it away from spark plug.

ALWAYS remove key to prevent unauthorized use.

Know the weight of loads. Limit loads to those you can safely control and the unit can safely handle.

Disengage PTO when attachment is not in use.

ALWAYS turn off power to attachment when travelling, crossing driveways, etc.

Hazardous Slopes

Mow up and down slopes, not across them. Do not operate on slopes over 10°.

Keep all movements on the slope *slow* and *gradual*. Do not make sudden changes in speed or direction.

Avoid starting or stopping on the slope. If tires lose traction, disengage the blades and proceed slowly *straight* down the slope.

If you cannot back up a slope or you feel uneasy on it, do not mow it.

DO NOT park on slopes unless necessary. When parking on slope always chock or block wheels. Always set parking brake.

Transport

Use extra care when loading or unloading unit onto trailer or truck.

Secure unit chassis to transport vehicle. NEVER secure from rods or linkages that could be damaged.

DO NOT transport machine while engine is running.

ALWAYS turn off power to attachment when transporting.

Cleaning

Keep unit free of leaves, debris, etc. Clean up oil or fuel spills.

MAINTENANCE AND SERVICE SAFETY RULES

ALWAYS block wheels and know all jack stands are strong and secure and will hold weight of unit during maintenance.

Keep nuts and bolts tight, especially blade attachment bolts, and keep equipment in good condition.

NEVER attempt to make any adjustments to unit while engine is running. Stop engine, remove spark plug wire and wait for all moving parts to stop before servicing (except where specifically recommended).

ALWAYS maintain unit in safe operating condition.

NO smoking, NO sparks, NO flames. Always allow engine to cool before servicing.

STORAGE SAFETY RULES

For extended storage, clean unit thoroughly.

Lower cutting deck unless a positive mechanical lock is used.

ACCESSORY AND ATTACHMENT SAFETY RULES

Use only attachments or accessories designed for your unit.

Check attachment components frequently. If worn or damaged, replace with manufacturer's recommended parts.

ASSEMBLY



WARNING: AVOID INJURY. Read and understand *Assembly Safety Rules* before proceeding.

Unpack Deck

Remove deck and all other components from the shipping container.

ASSEMBLING AND INSTALLING DECK

1. Place deck on a flat surface large enough to allow you to drive tractor over mower deck.
2. Install discharge chute to deck.
3. Install ramps on deck.

Preparing Tractor

1. Place tractor rockshaft arms in float position.
2. Decrease tension on center rockshaft flotation chain. See operator manual.

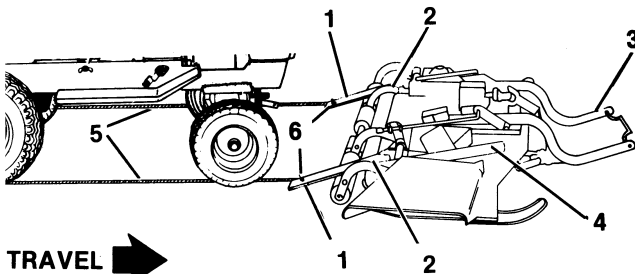
Driving Tractor Over Mower



CAUTION: Drive over mower slowly and carefully to avoid any damage. Be prepared to stop as soon as front wheels contact the ground in front of deck.

NOTE: If deck is laying on a smooth surface, it will slide if you attempt to drive over it with tractor. If installing deck on a smooth surface:

- Find two (2) pieces of rope 6' long.
 - Tie a knot at the end of each rope.
 - Thread a rope through each ramp.
 - Lay ropes straight back from deck.
1. Drive tractor up to deck and align with ramps.
 2. Drive tractor up ramps and over deck.



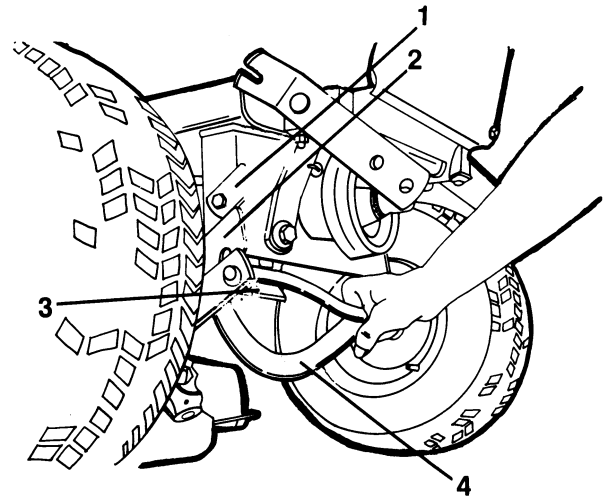
- | | |
|-----------------|-------------------------|
| 1. Ramps | 4. Height Control Lever |
| 2. Rivets | 5. Rope |
| 3. Mower Hanger | 6. Knots |

Figure 3

OT11530

Attaching Deck

1. Swing mower hanger up onto tractor saddle brackets and lower locks and latches.

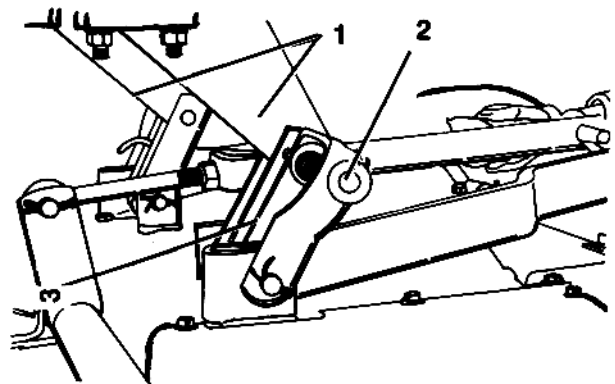


- | | |
|----------|-------------------|
| 1. Lock | 3. Saddle Bracket |
| 2. Latch | 4. Mower Hanger |

Figure 4

OT11550

2. Raise height control lever and install pins from channel support arms onto center rock shaft arms on tractor.



- | |
|---------------------------|
| 1. Center Rock Shaft Arms |
| 2. Pins |
| 3. Channel Support Arms |

Figure 5

OT11570

3. Apply a light coat of grease to the PTO shaft.
4. Slide PTO yoke into PTO spline shaft.
5. Connect collar on PTO yoke to PTO on tractor. Slide collar back, place on PTO and let collar slide forward to lock.
6. Increase tension on center rockshaft flotation spring. See operator manual.

Check Function of All Controls

Ensure unit runs and performs properly. Refer to *Operation*.



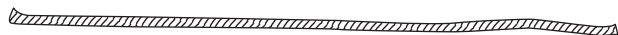
WARNING: Failure of controls could result in death or serious injury.

REMOVING DECK

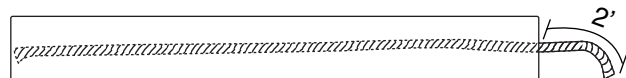
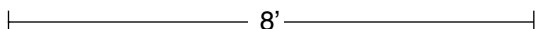
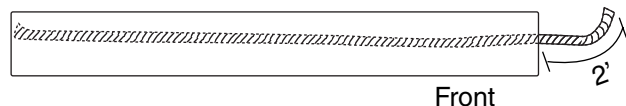
For Smooth Surfaces

NOTE: If deck is laying on a smooth surface, it will slide if you attempt to drive over it with tractor. If installing deck on a smooth surface:

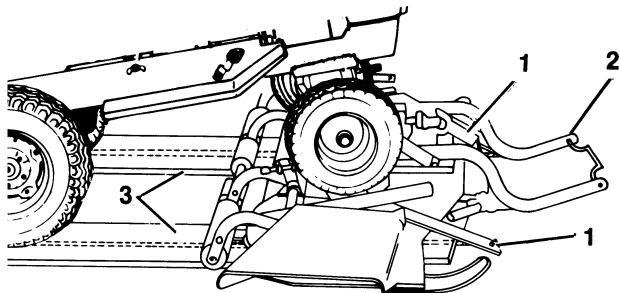
1. Lay two 10' lengths of rope on the ground.



2. Lay an 8' board over each rope. Leave 2' of rope extending from front end of boards.



3. Drive tractor on boards so front wheels are about a foot past the front end of boards. Do not let front wheels rest on 2' sections of rope.
4. Follow steps below for taking off deck.



- | | |
|-----------------|-----------|
| 1. Ramps | 3. Boards |
| 2. Mower Hanger | 4. Ropes |

OT11540

Figure 6

For Normal Surfaces

1. Place height control lever in lowest position.
2. Decrease tension on center rockshaft flotation chain. See operator manual.
3. Disconnect PTO shaft from PTO.
4. Remove pins from channel support arms, and slide arms off of center rock shaft arms.
5. Unlock latches on tractor saddle brackets and swing mower hanger down.
6. Place ramps on front of mower deck.
7. Tie ropes to ramps (if ropes are used).
8. Back up and over deck carefully.

OPERATION



WARNING: AVOID INJURY. Read and understand *Operational Safety Rules* before proceeding.

CONTROLS AND FEATURES

See Figure on page 2 for all Controls and Features locations.

TO STOP IN AN EMERGENCY

Turn ignition key to OFF.

PRE-START

Refer to tractor's owner manual for tractor pre-starting and operation.

Transport the equipment to the area to be mowed.

IMPORTANT: Place Hydraulic Lift Lever to the raised position when transporting.

Set cutting height. See *Service and Adjustments*.

ENGAGING MOWER

Refer to tractor's owner's manual for tractor starting and shut off.

To start mower:

1. Set desired cutting height.
2. Place Hydraulic Lift Lever in the FLOAT position.
3. Place throttle lever at 1/3 speed.
4. Engage PTO.
5. Move the throttle lever to full speed.

To disengage mower, disengage PTO. Keep the PTO disengaged when not mowing.

OPERATING TIPS

Be sure to keep your mower blades sharp.

Check pitch and level of mower frequently.

If grass is high or contains a high amount of moisture, cut the grass twice. On the first pass, cut grass higher than normal. On the second pass, cut grass at the desired height.

Cut grass when it is dry.

Plan your cutting pattern to always trim with the left side of the mower.

Make slow turns when cutting to prevent scuffing lawn.

MAINTENANCE

Ariens Dealers will provide any service or adjustments which may be required to keep your unit operating at peak efficiency. Should engine service be required, contact an Ariens dealer or an authorized engine manufacturer's service center.



WARNING: AVOID INJURY. Read and understand *Maintenance and Service Safety Rules* before attempting any maintenance.

MAINTENANCE SCHEDULE

Service Performed	Daily	Every 25 hrs.	Every 100 hrs.
Check Fasteners	•		
General Lubrication		•	
Check Mower Blades		•	
Check Deck Belt			•

CHECK FASTENERS

Be certain that all hardware is tightened to the proper torque. Pay special attention to mower blades, guards and safety shields.

GENERAL LUBRICATION

Check lubricant level in gearbox every 25 hours and at the beginning of season.

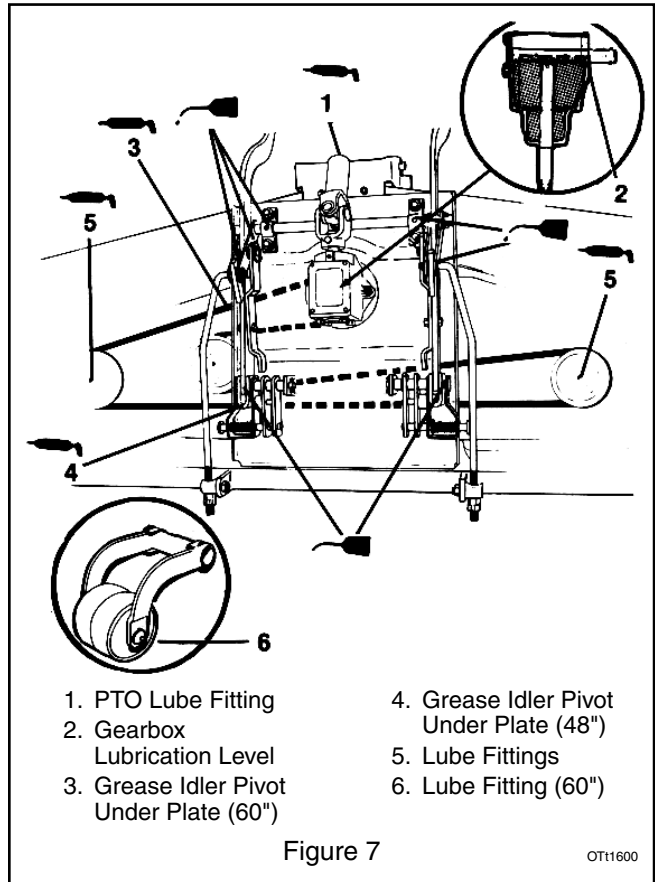
To check and fill:

1. Remove cover on top of gearbox.
2. Check that lubrication is level with center line of input shaft. Fill if necessary.
3. Replace cover.

Lubricate all lube fittings and pivot points at the beginning of each season and every 25 hours (Figure 7).

IMPORTANT: Wipe each fitting clean before and after lubrication.

Apply Stens Mix Hi-Temp Grease or equivalent to the lube fittings. Order P/N: 00036800 - three pack of 3 oz. cartridges.



CHECK MOWER BLADES

Check mower blades for wear every 25 hours of operation. Ensure blade hardware is tightened to 50 - 60 ft. lbs. (68-81 Nm) of torque. See *Service and Adjustments* to sharpen blades.

CHECK DECK BELT

Check deck belt every 100 hours and every season. Replace if worn or deteriorated. Replace belts to accommodate belt stretch and wear in the traction drive or mower drive. Refer to *Service and Adjustments* for procedures.

SERVICE AND ADJUSTMENTS



WARNING: AVOID INJURY. Read and understand *Maintenance and Service Safety Rules* before attempting any maintenance.

SETTING CUTTING HEIGHT

To set cutting height:

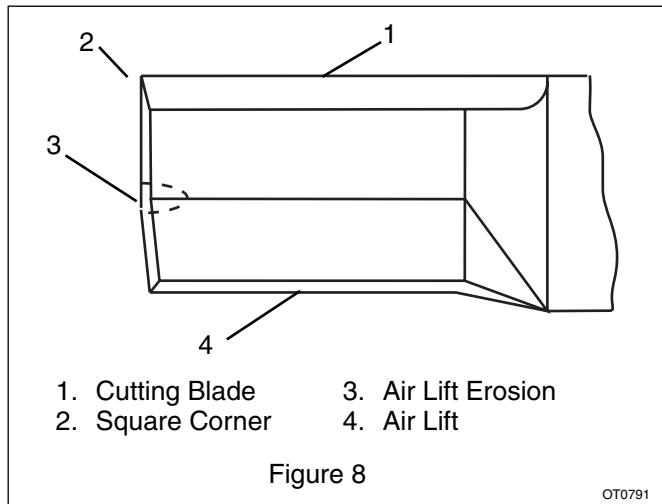
1. Pull cutting height lever out of slot in quadrant.
2. Place in higher slot to raise cutting height. Place in lower slot to lower cutting height.

REPLACING MOWER BELT

1. Remove deck from tractor. See *Assembly*.
2. Remove center blade from deck.
3. Remove left and right belt covers.
4. Pull belt off of right spindle pulley (Figure 9).
5. Remove mounting plate hardware. Note location of shims, idler pivot (48" deck) and spacer for replacement later.
6. Tip mounting plate up and back.
7. Remove belt from center drive pulley, idler and blade pulleys.
8. Install new belt around center drive pulley, spring loaded idler and left hand blade pulley.
9. Reinstall mounting plate.
10. Replace center blade. Install lock washer and nut. Tighten nut to 50-60 ft. lbs. (68-81 Nm).

MOWER BLADES

NOTE: If mower is used under sandy soil conditions, replace blades when air lifts become eroded through at ends (Figure 8).



Sharpen the Mower Blades



CAUTION: Use sturdy gloves or padding to protect hands when working with mower blades.

1. Turn the engine off. Remove the ignition key. Remove the ignition wire from the spark plugs.
2. Remove the jam nut, lock washer and the blades from the spindle shafts.

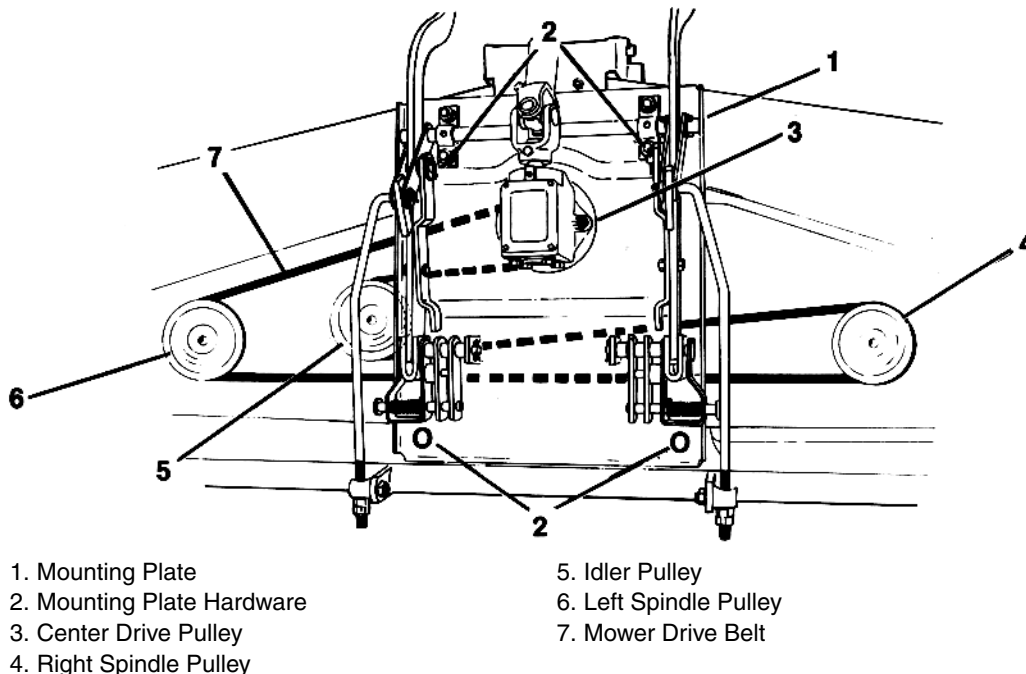


Figure 9

OF1630

- Sharpen the beveled edges of the blades in a straight line. Do not change the angle of the beveled edge. If more than 0.5 inches (12.7mm) are removed from the width of a blade, discard the blade. Make sure the sharpened blades are balanced. Balance must be held within 1.3 inch ounces.
- Put the blades, lock washers, and the jam nuts back on the spindle shafts.
- Tighten the bolts to 50 - 60 ft. lbs. (68-81 Nm) of torque.
- Put the ignition wires back on the spark plugs.

LEVELING THE MOWER DECK

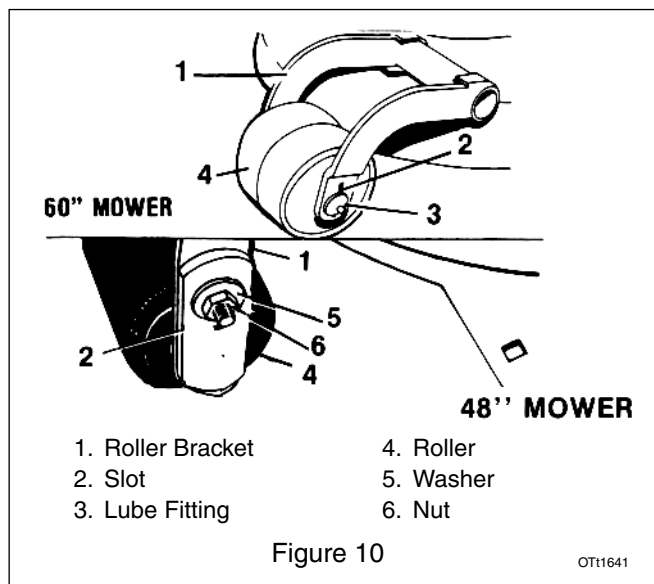
Adjust leveling on a flat surface.

To check deck level:

- Loosen nuts on rollers, place rollers in lowest position, and tighten nuts.
- Raise discharge chute.
- Measure height of deck at each side. Measurements must be within 1/16" (1.5 mm) of each other.

To change deck leveling:

- Loosen nut on roller on side of mower pan that was higher.
- Raise roller and tighten nut.
- Check deck level. Adjust roller again if necessary.



ADJUSTING PITCH

To check:

- Place mower blades to run from front to back of deck.
- Ensure rollers are contacting ground. Lower deck if necessary.
- Measure distance from ground to front tip of each blade.

- Measure distance from ground to rear tip of each blade.
- The front tips of blades should be 1/8" to 1/4" (3 - 6mm) lower than rear tips.

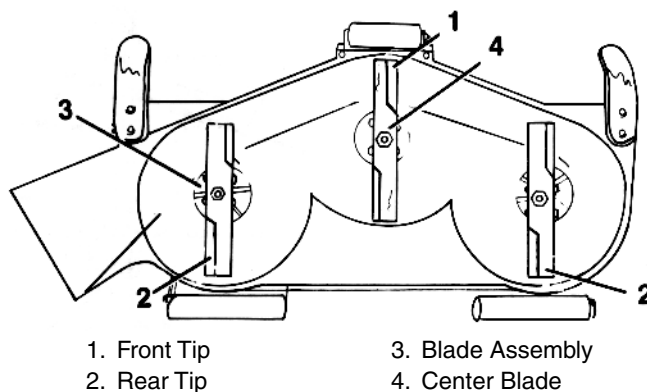


Figure 11

OT11660

To adjust:

- Loosen locking nuts on adjustment rod.
- Tighten adjustment nuts to raise front tips of mower blades. Loosen adjustment nuts to lower front tips of mower blades.

IMPORTANT: Turn adjustment nuts on left and right side of decks equally to maintain proper level.

- Tighten locking nuts.

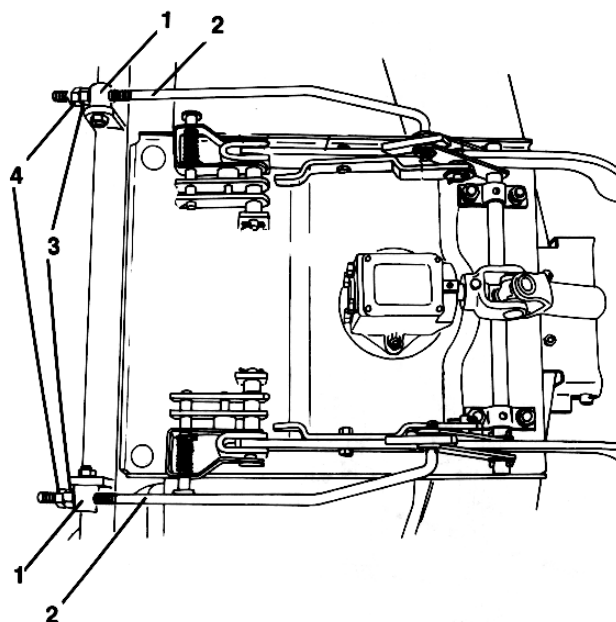


Figure 12

OT11670

STORAGE



WARNING: AVOID INJURY. Read and understand *Storage Safety Rules* in *Safety* section before proceeding.

SHORT TERM

IMPORTANT: NEVER spray unit with water or store unit outdoors.

Inspect unit for visible signs of wear, breakage or damage.

Keep all nuts, bolts and screws properly tightened and know unit is in safe working condition.

Store unit in a cool, dry protected area.

LONG TERM

Clean unit thoroughly and lubricate (see *Maintenance*). Touch up all scratched painted surfaces.

Remove weight from wheels by putting blocks under frame or axle.

When storing unit for extended periods of time, remove all fuel from tank and carburetor (run dry). Refer to engine manual.

Clean and charge the battery. Charge battery every three to four weeks when storing unit.

TROUBLESHOOTING

PROBLEM	PROBABLE CAUSE	CORRECTION
Mower won't engage	<ol style="list-style-type: none"> 1. Attachment blocked. 2. Bad PTO switch. 	<ol style="list-style-type: none"> 1. Stop unit, remove key and clear attachment. 2. Replace switch (see Dealer).
Abnormal vibrations or sounds	<ol style="list-style-type: none"> 1. Loose hardware. 2. Debris in mower deck. 3. Mower blades damaged. 4. Mower belt damaged or off pulleys. 	<ol style="list-style-type: none"> 1. Check and tighten all hardware. 2. Clear debris before starting unit. 3. Replace mower blades. 4. Install or replace belt.



Ariens Company
655 West Ryan Street
P.O. Box 157
Brillion, WI 54110-0157
920-756-2141
Fax 920-756-2407
www.ariens.com

2-Year Limited Warranty

Ariens Company warrants to the original purchaser that consumer products manufactured by Ariens Company will be free from defects in material and workmanship for a period of two (2) years after the date of purchase, and will repair any defect in material or workmanship, and repair or replace any defective part, subject to the conditions, limitations and exclusions set forth herein.

The two-year duration of this warranty applies only if the product is put to ordinary, reasonable, and usual personal, family, or household uses. If the product is put to any business, commercial, or industrial use such as, but not limited to, commercial landscaping, mowing or snow removal services, or golf course or park maintenance, or agricultural or farmstead use, then the duration of this warranty is ninety (90) days after the date of purchase, or one (1) year after the date of purchase if the product is labeled as a Professional/Commercial Product. If any product is rented or leased, then the duration of this warranty is ninety (90) days after the date of purchase.

Genuine Ariens service parts and accessories not purchased with the product covered by this warranty, but which are later purchased and used with that product, are warranted to be free from defects in material and workmanship for a period of ninety (90) days after date of purchase, and Ariens Company will repair or replace any such part or accessory free of charge, except for labor, during that period.

This warranty is subject to the following conditions, limitations, and exclusions:

This warranty is valid only if the following conditions are met:

- The purchaser must perform maintenance and minor adjustments explained in the owner's manual.
- The purchaser must promptly notify Ariens Company or an authorized Ariens service representative of the need for warranty service.
- Returning the product registration card to Ariens Company will enable the company to contact the registrant with repair or replacement part information.

This warranty is subject to the following limitations:

- The purchaser must transport the product to and from the place of warranty service.
- Warranty service must be performed by an authorized Ariens service representative. (To find an authorized Ariens service representative, contact Ariens Company at the website, number or address above.)
- Batteries are warranted only for a period of twelve (12) months after date of purchase, on a prorated basis. For the first ninety (90) days of the warranty period, a defective battery will be replaced free of charge. If the applicable warranty period is more than 90 days, Ariens Company will cover the prorated cost of any defective battery, for up to twelve (12) months after the date of purchase.

The following items are not covered by this warranty:

- Engines and engine accessories are covered only by the warranty made by the engine manufacturer, and are not covered by this warranty.
- If the product is equipped with a Peerless gearbox and/or transmission, the gearbox and/or transmission are covered only by the warranty made by Peerless, and are not covered by this warranty.
- If the product is equipped with a Hydro-Gear transmission and/or Hydro-Gear drive components, the Hydro-Gear transmission and/or drive components are covered only by the warranty made by Hydro-Gear, and are not covered by this warranty.
- Parts that are not genuine Ariens service parts are not covered by this warranty.
- Shoes, runners, scraper blades, shear bolts, string trimmer height guide, mower blades, mower vanes, trimmer line, headlights, light bulbs are not covered by this warranty.
- Any defect which is the result of misuse, alteration, improper assembly, improper adjustment, neglect, or accident is not covered by this warranty.
- Products which were not purchased in the United States, Puerto Rico, or Canada are not covered by this warranty. In all other countries, contact place of purchase.

LIMITATION OF REMEDY AND DAMAGES

Ariens Company's liability under this warranty, and under any implied warranty that may exist, is limited to repair of any defect in workmanship, and repair or replacement of any defective part. Ariens Company shall not be liable for incidental, special, or consequential damages (including lost profits). Some states do not allow the exclusion of incidental or consequential damages, so the above limitation or exclusion may not apply to you.

DISCLAIMER OF FURTHER WARRANTY

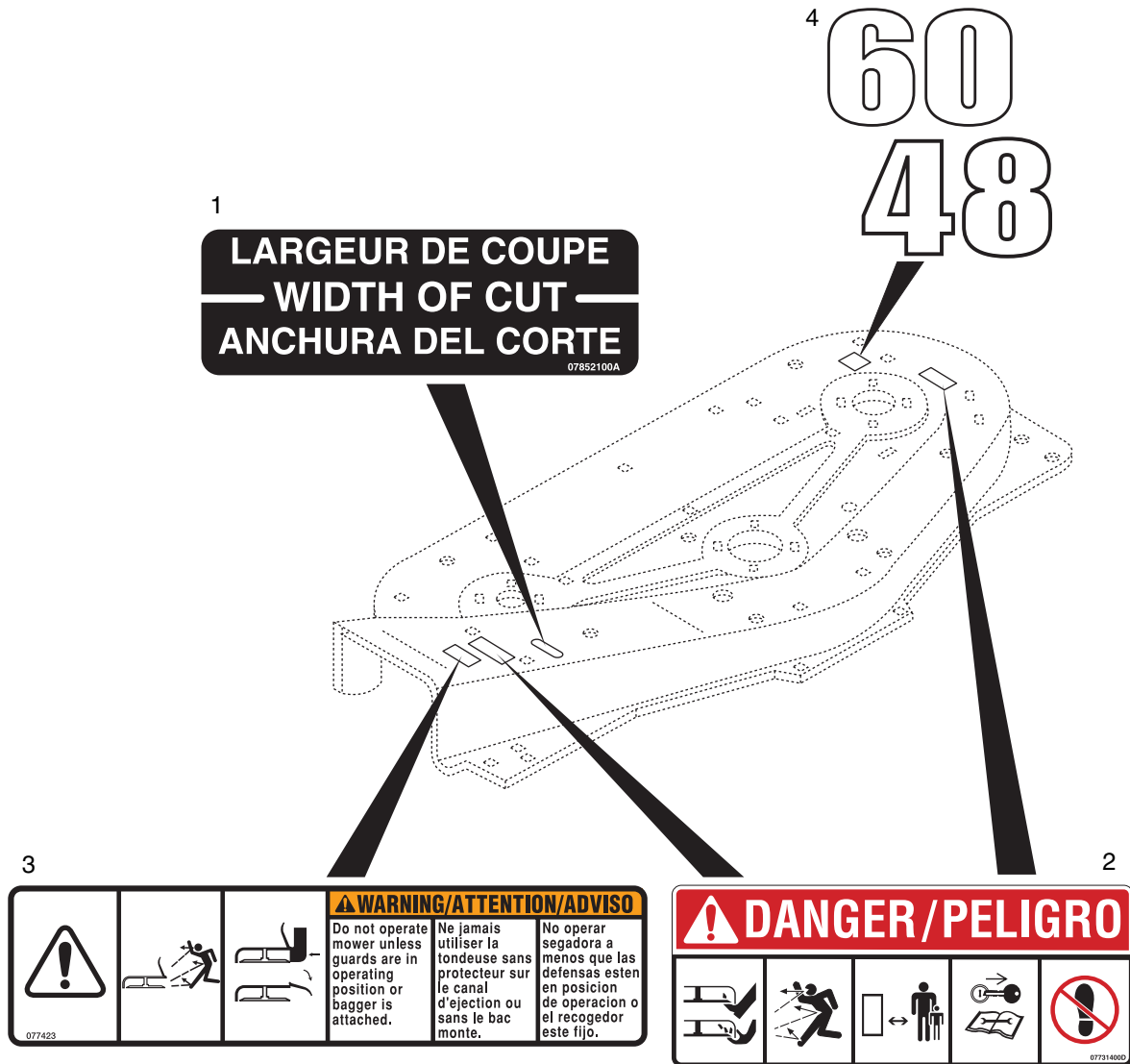
Ariens Company makes no warranty, express or implied, other than what is expressly made in this warranty. If the law of your state provides that an implied warranty of merchantability, or an implied warranty of fitness for particular purpose, or any other implied warranty, applies to Ariens Company, then any such implied warranty is limited to the duration of this warranty. Some states do not allow limitations on how long an implied warranty lasts, so the above limitation may not apply to you.

This warranty gives you specific legal rights, and you may also have other rights which vary from state to state.

Form: ALW2-122002

DECALS

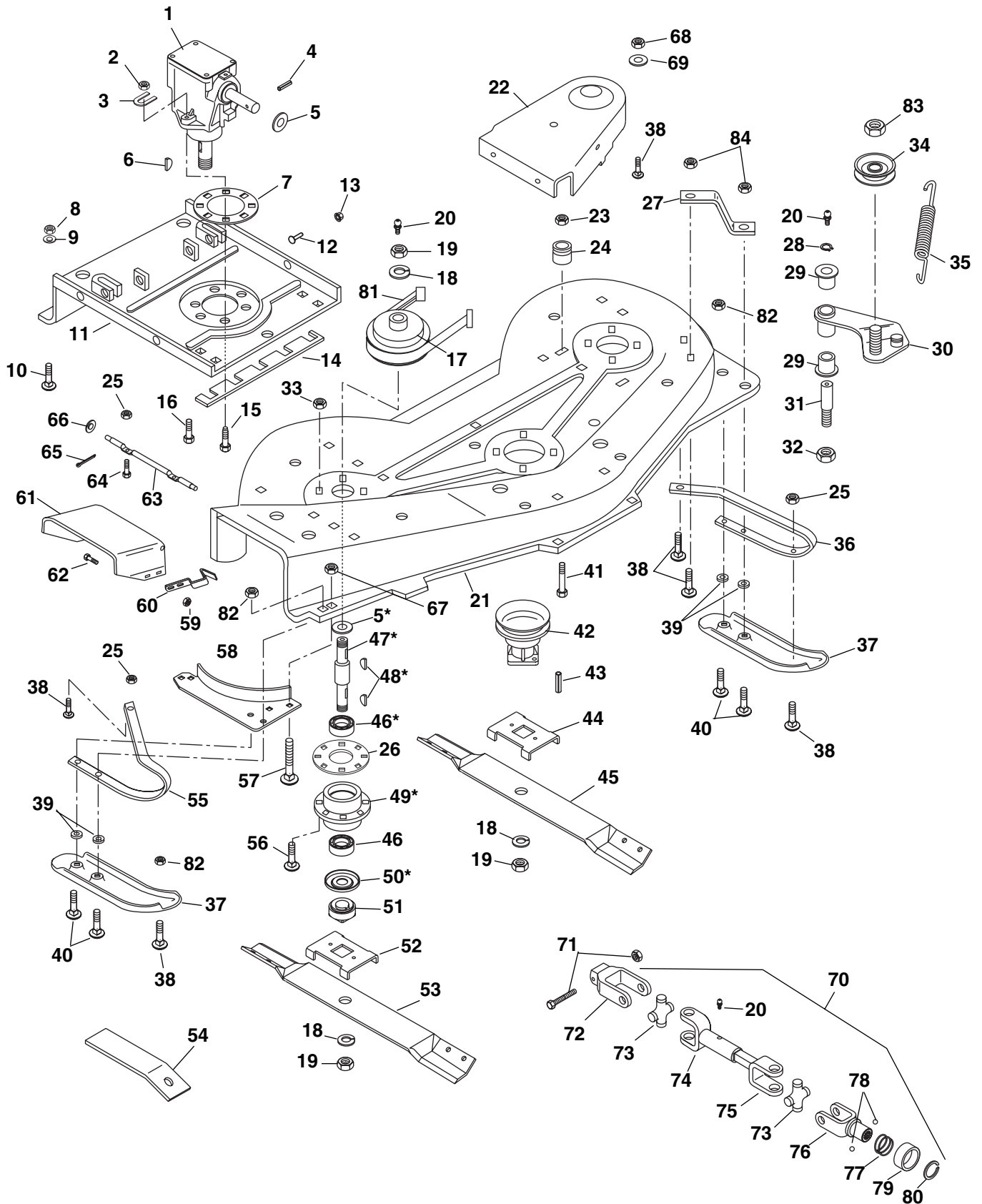
Model 831026,031



Item	Part No.	Qty.	Description
1	07852100	1	Decal, Width of Cut
2	07731400	2	Decal, Mower Pan Head Danger
3	07742300	1	Decal, Warning
4	05233300	1	Decal, 48"
	05232000	1	Decal, 60"

60" MOWER

Model 831026



OT0983

60" MOWER

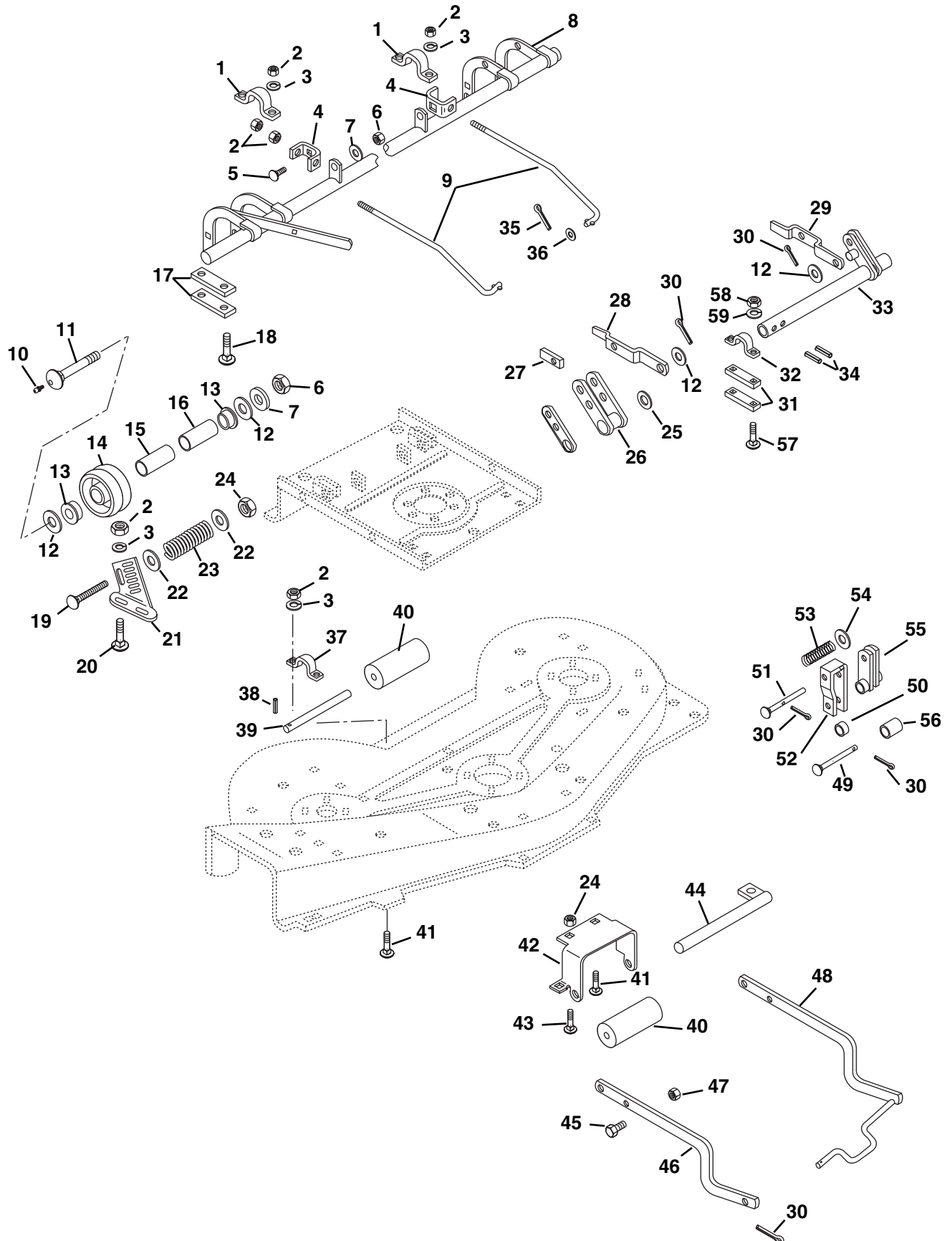
Model 831026

Item	Part No.	Qty.	Description	Item	Part No.	Qty.	Description
1	53106300	1	Mower Gearcase 48" Kit	49	03032300	2	Spindle Housing
2	06529800	2	Nut-Locking-Top .312-18	50	00341900	2	Bearing Slinger
3	03189900	2	Shim	51	03037500	2	Retainer Hub
4	05800900	1	Pin-Roll .125 x 1.00	52	00317000	2	Blade Tray
5	06444100	3	Washer-Flat-Steel .754 x 1.00 x .032	53	03032859	2	Mower Blade 22 1/2"
6	06601200	1	Key-Woodruf .25 x .75 x 5	54	03038000	2	Ramp
7	03121400	1	Shim	55	03034759	1	Skid Bar R.H.
8	06537300	5	Nut .50-13	56	06223600	8	Bolt-Round Head Square Neck .38-16 x 1.00
9	06306600	5	Washer-Locking .500 x .125	57	06203200	1	Bolt-Round Head Square Neck .38-16 x 2.00
10	06220900	3	Bolt-Round Head Square Neck .500-13 x 1.25 Grade 5	58	03041659	1	Deflector
11	03047159	1	Mounting Plate	59	06529700	2	Nut-Locking-Center .250-20
12	06805000	4	Rivet-Steel Right Hand .312 x .75	60	00318500	1	Flat Spring
13	06514900	4	Nut-Push .312	61	03034900	1	Chute Extension
14	03038100	4	Shim	62	06214300	2	Bolt-Round Head Square Neck .25-20 x .50
15	07413900	4	Screw-Tapping .312-18 x 1.0	63	03035000	1	Hinge Pin
16	05947500	2	Bolt-Hex .31-18 x 1.25 Grade 5	64	05947000	2	Bolt-Hex .31-18 x .75 Grade 5
17	03032900	2	Spindle Sheave	65	06706900	1	Pin-Cotter .09 x .75
18	06310300	5	Washer-Locking .750 x .188	66	06436200	1	Washer-Flat-Steel .406 x .81 x .065
19	06537700	5	Nut-Jam .75-10	67	06529400	1	Nut-Hex .375-16
20	07012600	2	Spin Drive Zerk Fitting	68	06529800	2	Nut-Locking-Center .312-18
21	53114700	1	60 Inch Mower Deck	69	06437200	2	Washer-Flat-Steel .344 x .688 x .065
	03096159	1	Belt Cover LH 60"	70	03093300	1	PTO Assembly
22	03096059	1	Belt Cover RH 60"	71	53102600	1	Shearbolt & Nut Assembly
23	06529600	4	Nut-Locking .375-16	72	03155700	1	Yoke
24	03032259	1	Spring Anchor	73	03155800	2	Journal Cross & Bearing Assembly
25	06543100	18	Nut-Hex .312-18	74	03094700	1	Slip Yoke
26	03402000	2	Plate	75	03094600	1	Yoke & Shaft
27	03034859	1	Brace	76	03155900	1	Yoke
28	05709200	1	Ring-Retaining-Extension .625 x .050	77	08738900	1	Spring
29	05502600	2	Bushing-Flange .625 x .750 x .500 x .875	78	05429900	2	Ball .312
30	03033000	1	Idler Arm	79	08739000	1	Collar
31	03032500	1	Idler Stud	80	08739100	1	Snap Ring
32	06536300	1	Nut-Locking-Center .50-13		53126000	1	Shaft Retention Kit
33	06542000	8	Nut-Lock-Jam-Center .375-16	81	07213300	1	V-Belt
34	07311100	1	Idler-Flat 2.75 x .38 Dayco	82	06543100	7	Nut-Locking-Top-Flange .31-18
35	08316800	1	Spring-Tension .121 x 1.06 x 6.5	83	06223600	8	Bolt-Round Head Square Neck .38-16 x 1.00 Grade 5
36	03034659	1	Skid Bar Left-Hand				
37	03034559	2	Skid				
38	06215700	15	Bolt-Round Head Square Neck .31-18 x .75 Grade 5				
39	02513500	4	Spacer				
40	06212100	4	Bolt-Round Head Square Neck .31-18 x 1.50				
41	05958500	2	Bolt-Hex .38-16 x 1.75 Grade 2				
42	03184400	1	Sheave				
43	05805500	2	Pin-Groove .188 x .75				
44	03037600	1	Blade Tray				
45	03027851	1	Blade				
46	05412000	4	Bearing-Ball .750 x 1.781 x .61				
47	53115100	2	Spindle Shaft w/Zerk				
48	06601400	4	Key-Woodruf .188 x .62 x .25				

* Spindle Assembly part no. 63135500 (includes items 5, 46-50)

60" MOWER HANGERS & ROLLERS

Model 831026



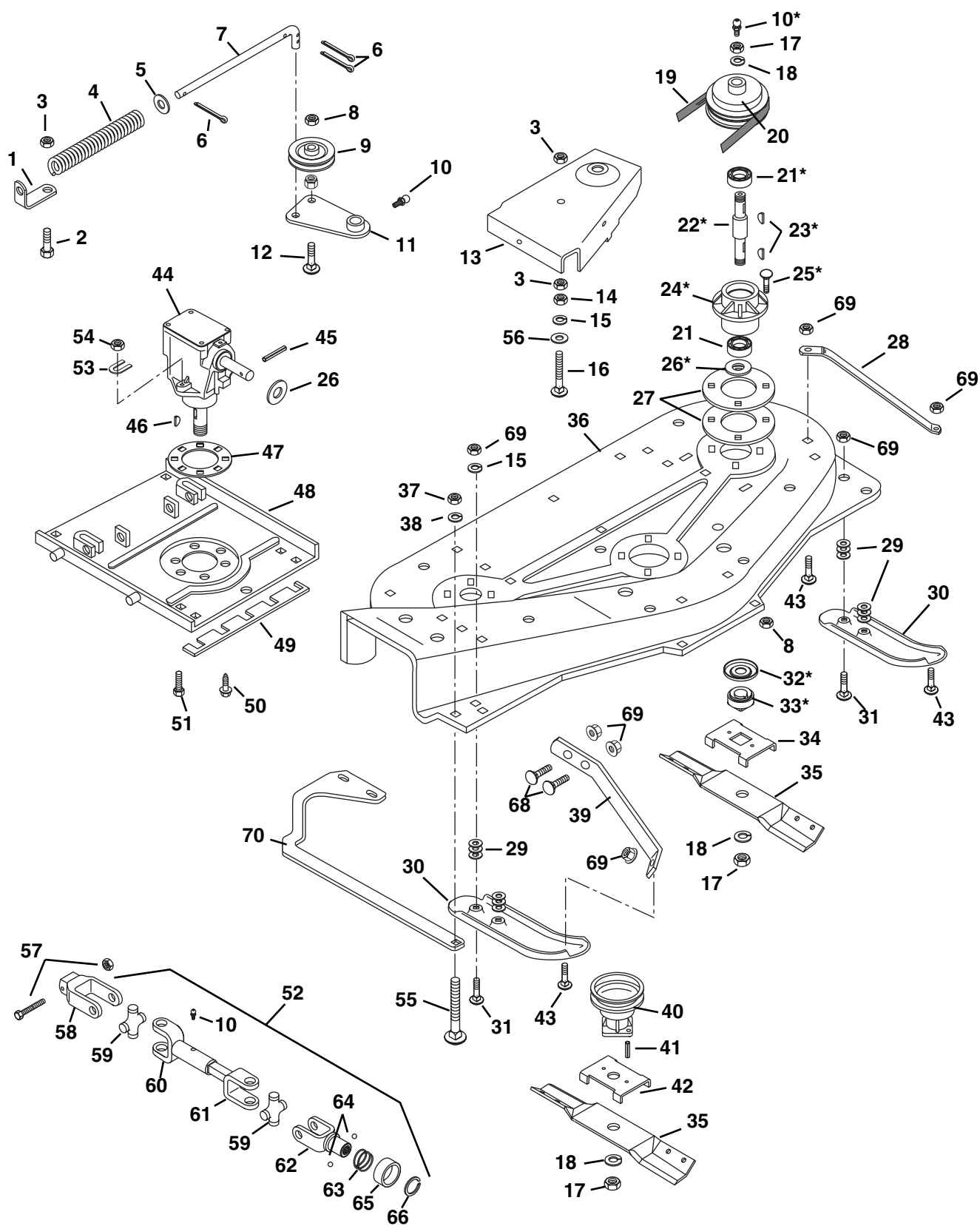
60" MOWER HANGERS & ROLLERS

Model 831026

Item	Part No.	Qty.	Description	Item	Part No.	Qty.	Description
1	03034351	4	Clamp	42	03464359	1	Bracket-Roller
2	06529200	12	Nut-Hex .312-18	43	06307300	4	Washer-Locking .500 x .125
3	06308600	12	Washer-Locking .312	44	03426200	1	Roller Shaft
4	03400451	2	Yoke	45	05948700	2	Bolt-Hex .38-16 x 1.00 Grade 5
5	06220900	2	Bolt-Round Head Square Neck .500-13 x 1.25	46	03035251	1	Hanger Arm
6	06536300	1	Nut-Locking-Center .50-13	47	06529600	2	Nut-Locking .375-16
7	06436600	1	Washer-Flat-Steel .505 x .880 x .072	48	03035351	1	Mower Hanger
8	03033751	1	Roller Frame	49	03122700	2	Clevis Pin
9	03035451	2	Adjustment Rod	50	03035100	2	Spacer
10	07012600	2	Fitting-Lube .25-28 x .256	51	03122100	2	Clevis Pin
11	53115000	2	Wheel Bolt w/Zerk	52	03122651	2	Support Channel
12	06436400	5	Washer-Flat-Steel .511 x 1.441 x .125	53	08313000	2	Spring-Compression .62 x .68 x 1.75
13	05414300	4	Bearing-Ball .500 x 1.125 x .500	54	06441900	2	Washer-Flat-Steel .531 x 1.06 x .095
14	07113300	2	Wheel 5 In O.D.	55	03124759	2	Arm
15	03033900	2	Wheel Hub	56	03121900	1	Spacer
16	03034000	2	Spacer Tube	57	06223100	4	Bolt-Round Head Square Neck .500-13 x 1.50
17	03034251	8	Pad	58	06537300	4	Nut .50-13
18	06216100	8	Bolt-Round Head Square Neck .312-18 x 1.00 Grade 5	59	06307300	4	Washer-Locking .500 x .125
19	06220200	1	Bolt-Round Head Square Neck .31-18 x 1.75 2006214100				
20	06214100	2	Bolt-Round Head Square Neck .31-18 x .75				
21	03034459	1	Quadrant				
22	06435700	2	Washer-Flat-Steel .38 x .875 x .083				
23	08313100	1	Spring-Compression .063 x .53 x 1.187				
24	06529800	1	Nut-Locking .312-18				
25	06441500	4	Washer-Flat-Steel .781 x 1.250 x .059				
26	03078751	1	Front Hanger Link				
27	03035551	2	Wear Plate				
28	03035751	1	Leveling Lever Right Hand				
29	03035651	1	Leveling Lever Left Hand				
30	06707100	4	Pin-Cotter .12 x 1.0				
31	03033359	4	Plate				
32	03033400	2	Clamp				
33	03033251	1	Front Hanger				
34	05800700	2	Pin-Roll .250 x 1.25				
35	06707300	2	Pin-Cotter .12 x .75				
36	06441000	2	Washer-Flat-Steel .50 x 1.25 x .083				
37	03032700	2	Roller Clamp				
38	05800600	1	Pin-Roll .250 x 1.00				
39	03032600	1	Shaft				
40	03114100	2	Roller				
41	06215700	8	Bolt-Round Head Square Neck .31-18 x .75 Grade 5				

48" MOWER DECK & DRIVE

Model 831031



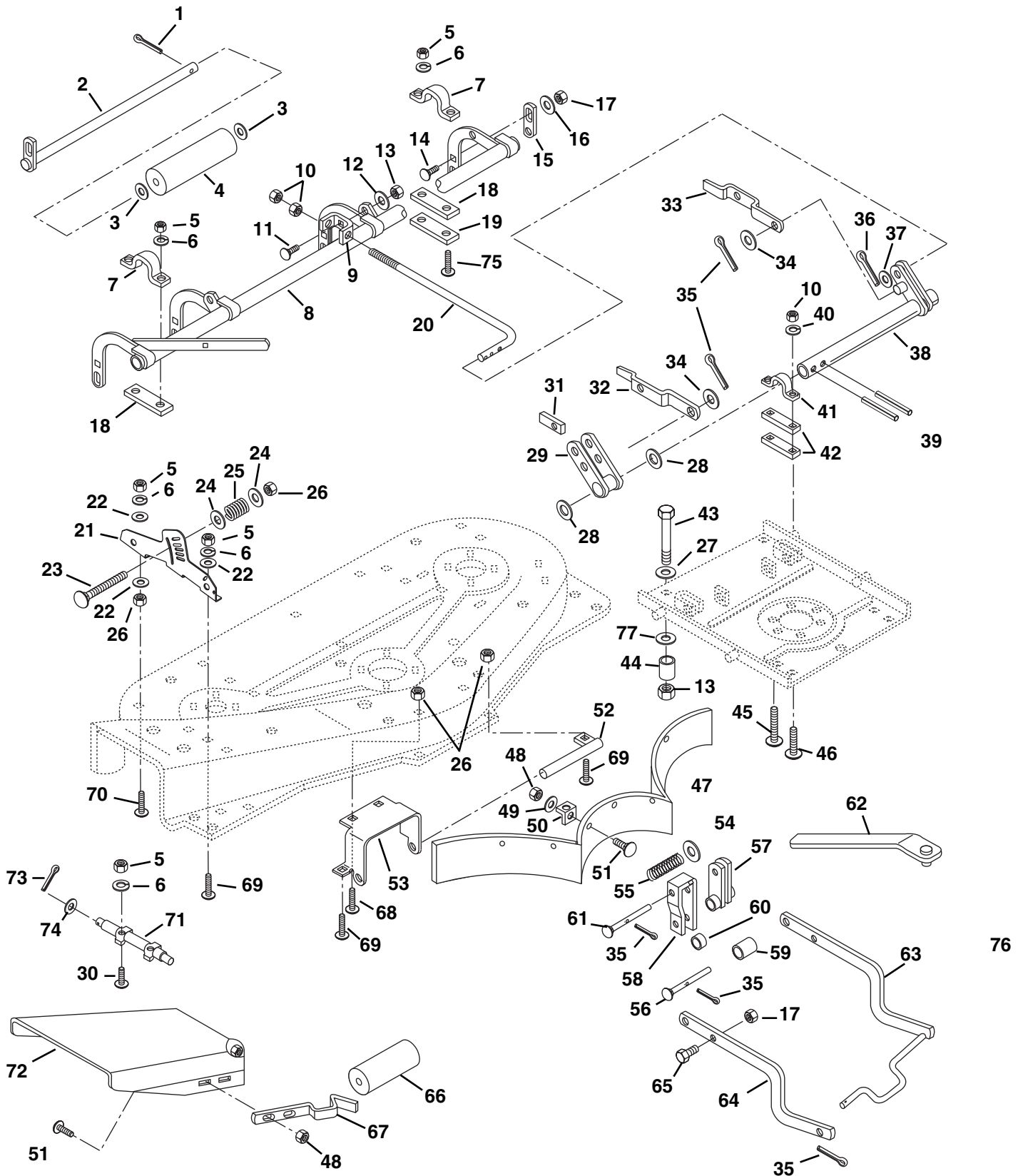
48" MOWER DECK & DRIVE

Model 831031

Item	Part No.	Qty.	Description	Item	Part No.	Qty.	Description
1	03418859	1	Bracket	44	53106200	1	Mower Gear Case Kit
2	05947000	1	Bolt-Hex .31-18 x .75 Grade 5	45	05800900	1	Pin-Roll .125 x 1.00
3	06529800	7	Nut-Locking .312-18	46	06601200	2	Key-Woodruff .25 x .75 x 5
4	08301800	1	Spring-Compression .106 x .63 x 12.0	47	03121400	2	Shim
5	06436200	1	Washer-Flat-Steel .406 x .812 x .065	48	03058159	1	Mounting Plate
6	06706900	2	Pin-Cotter .09 x .75	49	03038100	2	Mounting Plate Shim
7	03433900	1	Rod-Idler Spring	50	07406000	4	Screw-Tap .312-18 x 1.00
8	06542000	9	Nut-Locking-Jam-Center .375-16	51	05947500	2	Bolt-Hex .31-18 x 1.25 Grade 5
9	00542700	1	Idler	52	03093300	1	PTO Assembly
10	07012600	3	Zerk	53	03189900	2	Shim
11	53401000	1	Idler Arm w/Zerk	54	06529800	2	Nut-Locking-Top .312-15
12	07006300	1	Bolt-Button Head .38-16 x 1.25 Grade 5	55	05921600	1	Bolt-Hex .38-16 x 2.50 Grade 2
13	03095859	1	Belt Cover RH	56	06437200	2	Washer-Flat-Steel .344 x .688 x .065
	03095959	1	Belt Cover LH	57	53102600	1	Shearbolt & Nut Assembly
14	06529200	2	Nut-Hex .312-18	58	03155700	1	Yoke
15	06307400	9	Washer-Locking .312	59	03155800	2	Journal Cross & Bearing Assembly
16	06223500	2	Bolt-Round Head Square Neck .31-18 x 3.25	60	03026700	1	Slip Yoke
17	06537700	5	Nut-Jam .75-10	61	03026600	1	Yoke & Shaft
18	06310300	5	Washer-Locking .750 x .188	62	03155900	1	Yoke
19	07208100	1	V-Belt	63	08738900	1	Spring
20	03401800	2	Sheave	64	05429900	2	Ball .312
21	05412000	4	Bearing-Ball .750 x 1.78 x .61	65	08739000	1	Collar
22	53115100	2	Spindle Shaft w/Zerk	66	08739100	1	Snap Ring
23	06601400	4	Key	67	06529200	10	Nut-Hex .312-18
24	03433500	2	Spindle Housing	68	06216100	2	Bolt-Round Head Square Neck .312-18 x 1.00
25	06223900	8	Bolt-Round Head Square Neck .38-16 x .75 Grade 5	69	06543100	7	Nut-Locking-Top-Flange .31-18
26	06444100	2	Washer-Flat-Steel .754 x 1.000 x .032	70	01563059	1	Guard, Toe 48"
27	03433600	4	Spacer-Spindle	* Spindle Assembly part no. 63408000 (includes items 10, 21-26,32,33)			
28	03434500	1	Brace Left-Hand				
29	06435700	6	Washer-Flat-Steel .38x.875x.083				
30	03034559	2	Skid				
31	06216100	2	Bolt-Round Head Square Neck .312-18 x 1.00				
32	00341900	2	Bearing Slinger				
33	03037500	2	Retainer Hub				
34	03485500	2	Blade Tray				
35	03123751	3	Blade				
36	53401700	1	Mower Deck w/Decals				
37	06529400	1	Nut-Hex .375-16				
38	06306500	1	Washer-Locking .375 x .115				
39	03434459	1	Brace Right-Hand				
40	03184400	1	Sheave				
41	05805500	2	Pin-Groove .188 x .75				
42	03037600	1	Blade Tray				
43	06220800	3	Bolt-Round Head Square Short Neck .31-18 x .75 Grade 5				

48" MOWER HANGERS & ROLLERS

Model 831031



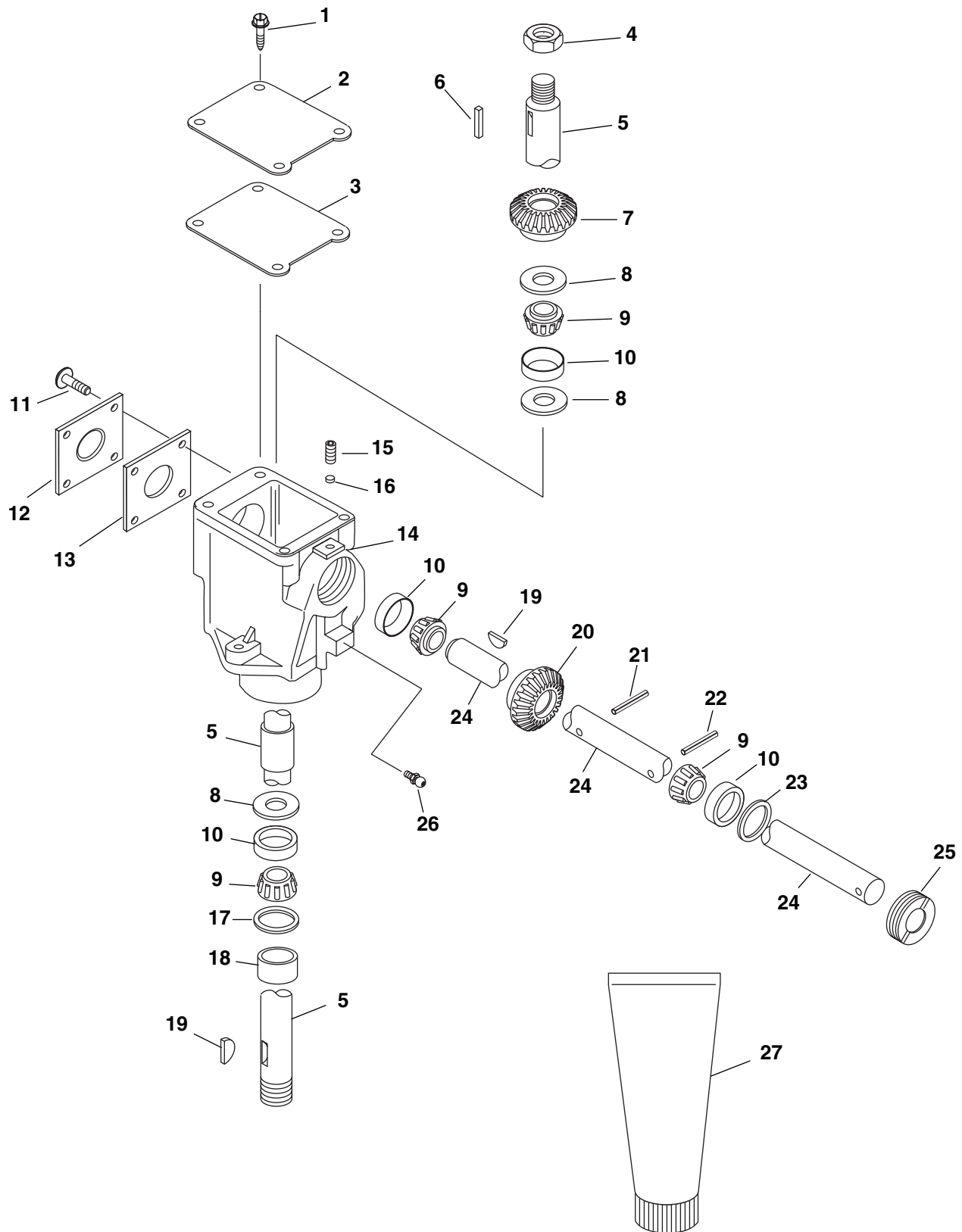
48" MOWER HANGERS & ROLLERS

Model 831031

Item	Part No.	Qty.	Description	Item	Part No.	Qty.	Description
1	06712000	2	Pin-Cotter .18 x 1.0	40	06306600	4	Washer-Locking .500 x .151
2	03435500	2	Roller Shaft	41	03033400	2	Clamp
3	06442800	4	Washer-Flat-Steel .656 x 1.31 x .095	42	03033300	4	Plate
4	03404200	2	Roller	43	05965500	2	Bolt-Hex .50-13 x 2.75 Grade 5
5	06429200	8	Nut-Hex .31-18	44	03433800	2	Spacer Pivot
6	06307400	10	Washer-Locking .312	45	06224800	2	Bolt-Round Head Square Neck .50-13 x 1.75
7	03402351	4	Clamp	46	06223100	2	Bolt-Round Head Square Neck .50-13 x 1.50
8	03401051	1	Roller Frame	47	03434259	1	Baffle
9	03400451	2	Yoke	48	06529700	14	Nut-Locking-Center .25-20
10	06537300	6	Nut .50-13	49	06437300	7	Washer-Flat-Steel .281 x .62 x .065
11	06224700	2	Bolt-Round Head Square Neck .50-13 x 1.25	50	03434300	7	Baffle Tab
12	06436600	2	Washer-Flat-Steel .505 x .880 x .062	51	06214300	14	Bolt-Round Head Square Neck .25-20 x .50
13	06536300	4	Nut-Locking-Center .500-13	52	03435200	1	Roller Shaft
14	06223600	4	Bolt-Round Head Square Neck .38-16 x 1.00	53	03435151	1	Bracket-Roller
15	03115651	2	Link	54	06441900	2	Washer-Flat-Steel .531 x 1.06 x .095
16	06435900	4	Washer-Flat-Steel .438 x 1.0 x .083	55	08313000	2	Spring-Compression .62 x .68 x 1.75
17	06529600	4	Nut-Locking .375-16	56	03122100	2	Clevis Pin
18	03434151	8	Adjustment Plate	57	03124751	2	Arm
19	03402451	7	Adjustment Plate	58	03122651	2	Support Channel
20	03403700	2	Adjustment Rod	59	03121900	2	Spacer
21	03435659	1	Quadrant	60	03035100	2	Spacer
22	06436700	2	Washer-Flat-Steel .323 x .625 x .062	61	03122700	2	Clevis Pin
23	06220200	1	Bolt-Round Head Square Neck .31-18 x 1.75	62	03038000	2	Ramp
24	06435700	2	Washer-Flat-Steel .38 x .875 x .083	63	03035351	1	Mower Hanger
25	08313100	1	Spring-Compression .063 x .53 x 1.187	64	03035251	1	Hanger Arm
26	06529800	5	Nut-Locking .312-18	65	05948700	2	Bolt-Hex .38-16 x 1.00 Grade 5
27	06441900	2	Washer-Flat-Steel .531 x 1.06 x .095	66	03114100	1	Roller
28	06416700	2	Washer-Flat-Steel .765 x 1.250 x .062	67	00318559	1	Flat Spring
29	03078751	1	Front Hanger Link	68	06212200	3	Bolt-Round Head Square Neck .312-18 x .62
30	05913500	2	Bolt-Hex .31-18 x .75 Grade 5	69	06215700	3	Bolt-Round Head Square Neck Grade 5 .31-18 x .75
31	03035551	2	Wear Plate	70	06212300	1	Bolt-Round Head Square Neck .31-18 x 2.75
32	03035751	1	Leveling Lever RH	71	03405800	1	Pin-Hinge
33	03035651	1	Leveling Lever LH	72	03034900	1	Chute Extension
34	06436400	2	Washer-Flat-Steel .511 x 1.44 x .125	73	06706900	1	Pin-Cotter .09 x .75
35	06707100	7	Pin-Cotter .12 x 1.0	74	06436200	1	Washer-Flat-Steel .406 x .812 x .065
36	06707300	2	Pin-Cotter .18 x 2.0	75	06212100	6	Bolt-Round Head Square Neck .31-18 x 1.50 Grade 5
37	06441000	2	Washer-Flat-Steel .50 x 1.25 x .083	76	06525800	4	Nut-Locking-Hex .50-13
38	03033251	1	Front Hanger	77	06439200	2	Washer-Flat-Steel .505 x 1.00 x .062
39	05800700	2	Pin-Roll .250 x 1.25				

MOWER GEAR CASE

Model 831026,031



MOWER GEAR CASE

Model 831026,031

Item	Part No.	Qty.	Description
1	07415600	4	Screw-Tapping 8-32 x .50
2	03183100	1	Gear Case Cover
3	03183500	1	Top Gasket
4	06512800	1	Nut-Jam-Cotter .562-18
5	03191200	1	Output Shaft
6	06602700	1	Key-Square .25 x .625 x .25
7	03184500	1	Gear (031)
	03182900	2	Gear-Bevel (026)
8	06420800	2	Washer-Flat-Steel .781 x 1.000 x .025
	06420600	2	Washer-Flat-Steel .781 x 1.000 x .005
	06420900	1	Washer-Flat-Steel .781 x 1.000 x .003
	06404100	1	Washer-Flat-Steel .781 x 1.000 x .032
	06420700	2	Washer-Flat-Steel .781 x 1.000 x .015
9	05404500	4	Bearing-Cone .750 x .61
10	05404400	4	Bearing-Cup 1.781 x .475
11	07414400	4	Screw-Tapping .312-18 x .75
12	03183200	1	Bearing Side Cover
13	53108400	1	Side Cover Gasket Set
	03190600	2	Side Cover Gasket
	03190700	1	Side Cover Gasket
	03190800	1	Side Cover Gasket
14	03183000	1	Gear Case
15	06001400	1	Screw-Set .25-.20 x .25
16	03191400	1	Plug
17	05606600	1	Seal 1.000 x 1.980 x .375
18	03191300	1	Spacer
19	06601200	2	Key-Woodruf .25 x .75 x 5
20	03184600	1	Gear (831015,031,038,301)
21	05807200	1	Pin-Groove .188 x 1.00
22	05804900	1	Pin-Groove .188 x 1.25
23	05606200	1	Seal .750 x 1.499 x .225
24	03184000	1	Input Shaft
25	01037100	1	Adjustment Plug
26	07012600	1	Fitting-Lube .25-28 x .256
27	00929100	10 oz.	Grease Stens



Ariens Company

655 West Ryan Street
P.O. Box 157
Brillion, WI 54110-0157
920-756-2141
Fax 920-756-2407
www.ariens.com