

FIGURE 1

The Gang Mower is shipped as four cartons, three mower units and a carton containing the hitches. The hitches are partially assembled with hardware in the position it is to be used.

#### ASSEMBLY

The bridge bar has already been attached to each mower unit. In the event this item is ever disassembled from the mower for possible repair or replacement, refer to Figure 2 for proper assembly of the parts.

Attach drawbars to bridge bars as illustrated in Figure 1. Install the two trailer drawbars to the bridge bar on the unit with tractor hitch and attach the two remaining units to ends of drawbars with clevis above bar.

The mower hitch is designed to allow transporting units by raising the wheels so that the units ride on the rollers only. This feature protects the reel and bed knife from damage when moving from plot to plot.

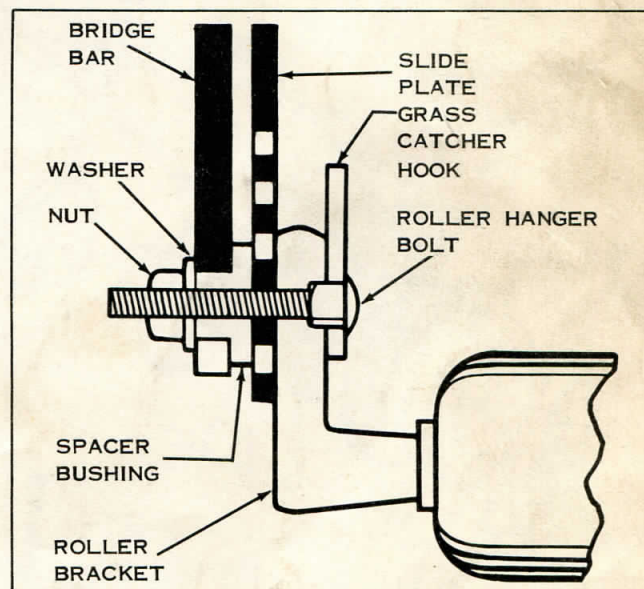


FIGURE 2

(Cont. on page 3)

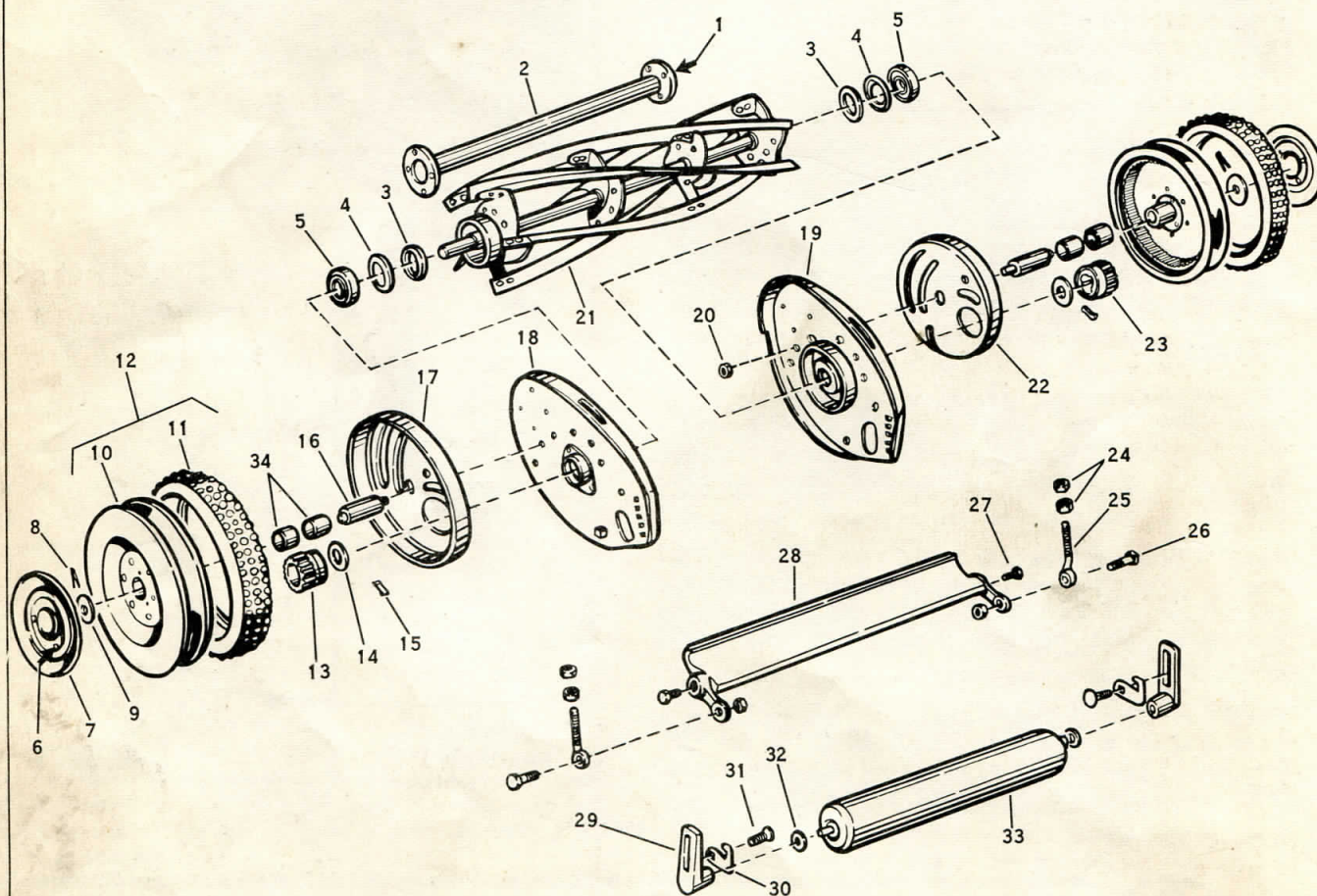
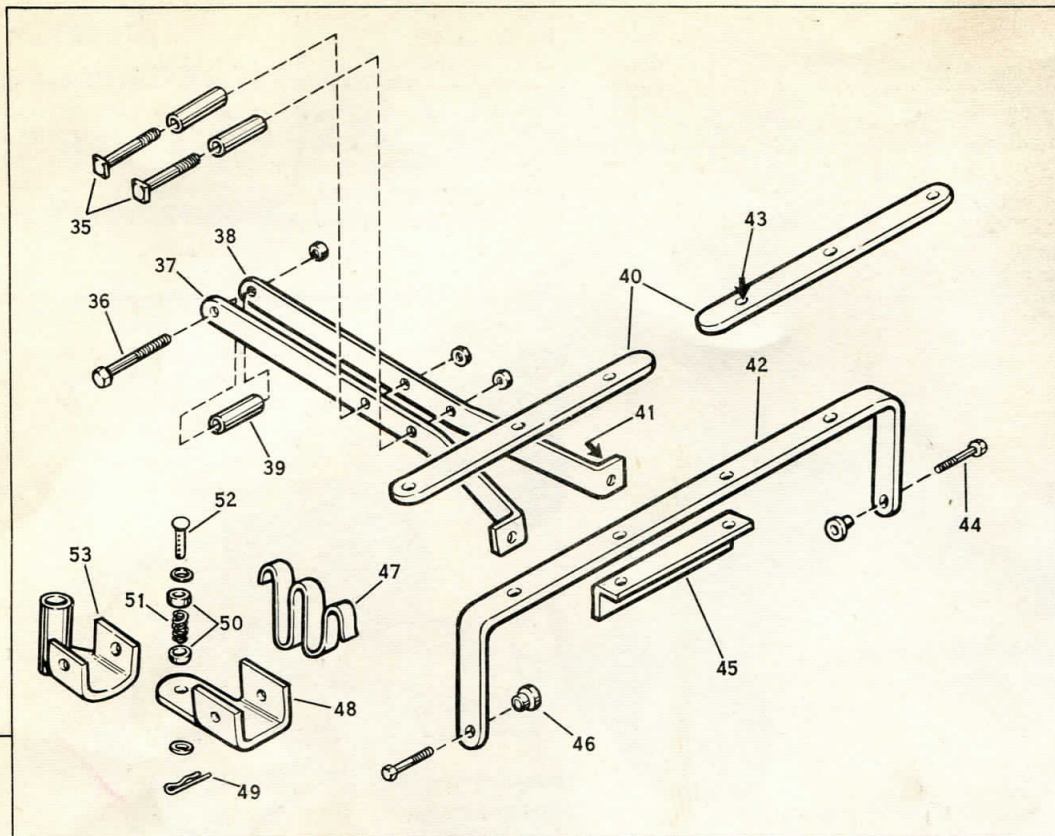


## **BOLENS PRODUCTS DIVISION**

Food Machinery and Chemical Corporation

Port Washington, Wisconsin, U. S. A.





MOWER EXPLODED VIEW - FIGURE 3



# PARTS LIST

Ref. No.	Part No.	Description	No. Req'd.
1		Rd Hd Screw No. 10-32 x 7/16"	8
2	1705706	Spacer Tube	1
3	1705709	Felt Washer	2
4	1705708	Felt Retainer	2
5	1705707	Bearing	2
6		Rd Hd Screw No. 10-32 x 3/8"	6
7	1705712	Hub Cover	2
8		Cotter Pin 1/8 x 5/8"	2
9	1705713	Washer	2
10	1705714	Wheel	2
11	1705716	Tire	2
12	1705715	Wheel & Tire (Inc. No. 10-11)	2
13	1705727	Pinion Gear LH	1
14	1705726	Felt Washer	2
15	1705725	Pawl	2
16	1705718	Axle	2
17	1705739	Gear Housing LH	1
18	1705737	End Plate LH	1
19	1705738	End Plate RH	1
20		Jam Nut 3/8-24	2
21	1705711	Reel 21"	1
22	1705740	Gear Housing RH	1
23	1705728	Pinion Gear RH	1
24		Hex Nut 3/8-24	4
25	1705731	Cutter Bar Adjusting Screw	2
26	1705736	Screw (Rear)	2
27	1705735	Screw (Front)	2
28	1705732	Cutter Bar	1
29	1705733	Roller Shaft Bearing	2
30	1705734	Basket Hook	2

Ref. No.	Part No.	Description	No. Req'd.
31		Carriage Bolt 5/16-18 x 1-1/16"	2
32		Washer 5/16 x 3/4"	2
33	1705700	Roller 21"	1
34	1705717	Bearing	4
	1705704	Wrench (Not Illustrated)	1
HITCH MODEL HD 403 02			
35		Hex Hd Capscrew 5/16-18 x 2-1/2"	6
36		Hex Hd Capscrew 5/16-18 x 2-3/4"	3
37	1706131	Center Drawbar LH	3
38	1706150	Center Drawbar RH	3
39	1706133	Spacer	9
40	1706134	Trailer Drawbar	2
41		Hex Hd Capscrew 5/16-18 x 3/4"	12
42	1706135	Bridge Bar	3
43		Hex Hd Capscrew 5/8-18x1"	4
44		Carriage Bolt 5/16-18 x 1-3/4"	6
45	1706136	Bracket	3
46	1706142	Bushing	6
47	1706137	Lock Spring	3
48	1706129	Clevis Bracket	2
49	1706138	Hair Pin Cotter	3
50	1706140	Spring Cup	4
51	1706139	Clevis Bracket Spring	2
52	1706141	Draw Bar Clevis Pin	2
53	1706132	Hitch Adapter Bracket	1

NOTE: All nuts and bolts are standard sizes and can be obtained from your Hardware or Implement Dealer.

Place the lock springs over spacer tube of mowers (double loop to rear) and hook looped ends over spacers between drawbars. These springs allow units to float for mowing or will lock units in transport position depending on which loops are used. Refer to Figure 4 for these settings.

Attach gang to tractor using F130A hitch. Adjust height of tractor hitch so that mower drawbar is in horizontal position.

## ADJUSTMENTS

The mowers can be set at three ranges of height of cut; high, medium, or low and each of these have variable settings. The main adjustment is made by changing position of wheel axles in holes in side plates. Proceed as follows referring to Figure 5. Remove hub caps, wheels and axles.

HIGH CUT RANGE - 1-3/4 to 2-1/4 inches, axle in hole (1) and dowel pin in hole (4).

MEDIUM CUT RANGE - 3/4 to 1-1/2 inches, axle in hole (2) and dowel pin in hole (5).

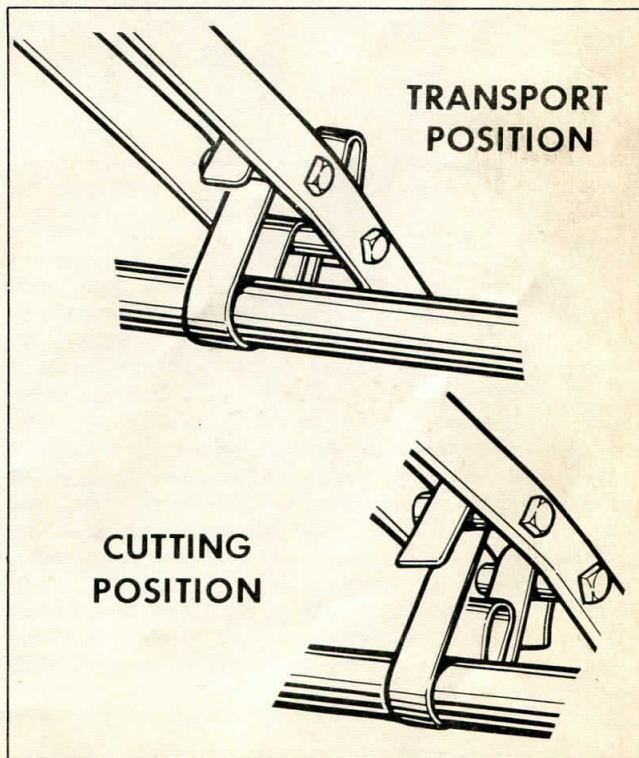


FIGURE 4



**LOW CUT RANGE** -  $\frac{3}{8}$  to 1 inch, axle in hole (3) and dowel pin in hole (6). (This range not recommended for normal cutting.) Settings within the ranges of each of the above are obtained by loosening the roller bolt and raising or lowering the roller. Be certain both sides are identically adjusted.

The mowers are shipped assembled for the high cut and when medium or low cuts are used it is necessary to invert the clevis on the hitches of the two rear mowers to keep drawbars horizontal. The horizontal adjustment for the front unit is made by lowering the tractor hitch. The high range of cut should be used in practically all cases as cutting lower than 1-1/2" will harm most grasses.

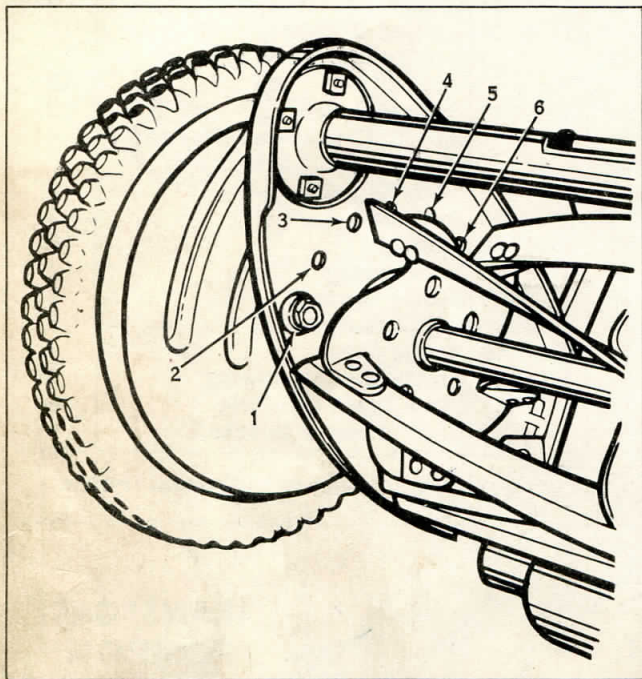


FIGURE 5

All mowers are properly adjusted at the factory but it is possible that through shipping the bed knife could be jarred out of adjustment. If adjustment is necessary, proceed as follows referring to Figure 6. To raise bed knife, loosen nut A one-quarter turn at a time, tightening nut B after each quarter turn. To lower bed knife reverse above procedure. Adjustment must be made on both sides of mower so that the reel is equal distance from bed knife at all points. Recommended clearance between reel and bed knife is .001" or less, but not touching. The mowers are well built and should cut without heavy contact of reel and bed knife. If they are set in heavy contact the wheels will skid and the mower will not operate. Very, very light contact may be necessary when mower is dull, but resharpening is a better answer.

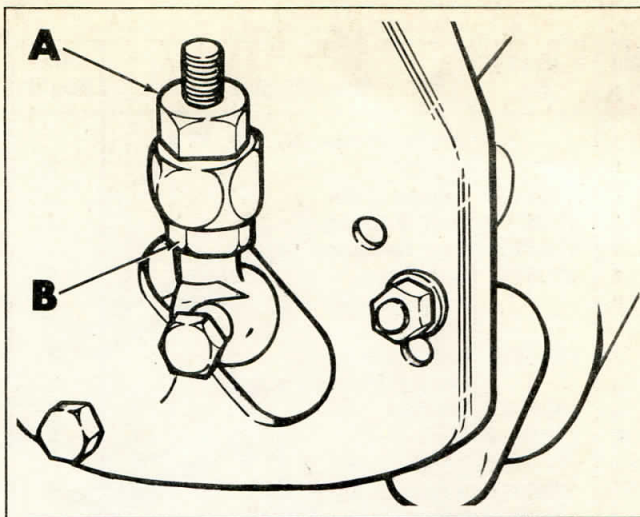


FIGURE 6

#### LUBRICATION

The reel bearings are sealed and require no lubrication. Periodically oil ends of roller shaft to maintain a free running roller.

#### OPERATION

It is recommended that when operating the 3 gang mower with the Ride-A-Matic tractor, the tractor drive chain sprockets be set in the high speed range to obtain maximum forward speed. Refer to page 5 of your tractor manual for complete information on this high range setting.

In addition to the above, for normal cutting operations, a high throttle setting and the Versa-Matic control lever in approximate  $\frac{3}{4}$  forward setting is recommended. Of course this control lever setting may be varied from half to full position depending on the individual operation and at what ground speed best control of the tractor is maintained. Long free cutting or close quarter cutting will be important factors governing tractor control.

When heavy cutting is encountered, the throttle should still remain in the high setting but the forward movement of tractor and mower reduced by placing the control lever in a slower speed setting. This will insure best cutting results and still provide sufficient power for the tractor.

When reversing the tractor, care must be taken to prevent jamming the mower units and hitches. In any situation where maneuvering is very difficult or impossible it is best to disengage the mower from tractor hitch, move tractor and mower to a free position and re-engage tractor and mower.

Use practical operating methods and reasonable care when mowing. Always inspect the plot to be mowed and remove any foreign matter that could cause damage to the mower reels or bed knives.